



New Products

SEPTEMBER 2023

We are continually expanding our portfolio to meet your research needs. *Check out* the new products released this month!

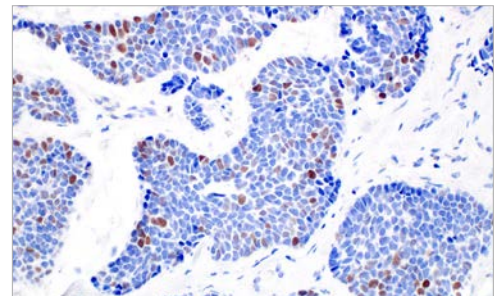
HOT PRODUCTS

BRCA1 (E5S9G) Rabbit mAb #50799

One of the cancer suppressor gene

The breast cancer susceptibility proteins BRCA1 and BRCA2 are frequently mutated in cases of hereditary breast and ovarian cancers and have roles in multiple processes related to DNA damage, repair, cell cycle progression, transcription, ubiquitination, and apoptosis. Numerous DNA damage-induced phosphorylation sites on BRCA1 have been identified, including Ser988, 1189, 1387, 1423, 1457, 1524, and 1542, and kinases activated in a cell cycle-dependent manner, including Aurora A and CDK2, can also phosphorylate BRCA1 at Ser308 and Ser1497, respectively.

KEYWORDS: Cancer suppressor gene, Breast cancer, Ovarian cancer, DNA damage



IHC-P: IHC analysis of paraffin-embedded human adenoid cystic carcinoma of the salivary gland using #50799.

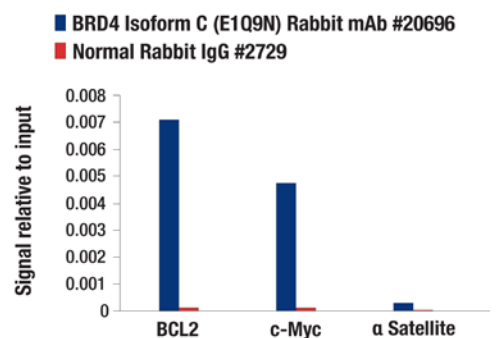
BRD4 Isoform C (E1Q9N) Rabbit mAb #20696

Transcription factor important for neuron

BRD4 may be promising therapeutic targets for various Myc-driven cancers, such as Burkitt's lymphoma and certain acute myeloid leukemias.

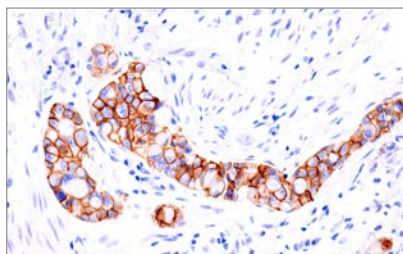
The expression of BRD4 isoform C, also known as the short isoform (BRD4-S), is similar to the long isoform (BRD4-L). The balance of expression between the two isoforms has been shown to contribute to disease states, where BRD4-S has shown to be oncogenic in a few contexts. BRD4-S is the predominant isoform that binds to modified histones and has a stronger affinity than BRD4-L. BRD4-S also plays a role in DNA damage, where it recruits the condensin II complex to control repair.

KEYWORDS: Cancer, DNA damage

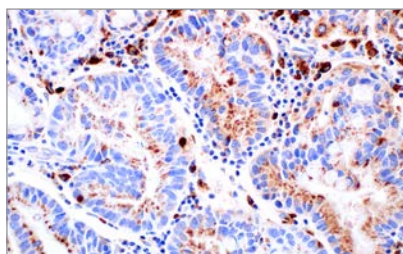


ChIP: ChIP were performed with cross-linked chromatin from MV-4-T1 cells and either #20696 or Normal Rabbit IgG #2729, using SimpleChIP® Plus Enzymatic Chromatin IP Kit (Magnetic Beads) #9005. The enriched DNA was quantified by real-time PCR, using human BCL2 promoter primers, SimpleChIP® Human c-Myc Intron 1 Primers #14905, and SimpleChIP® Human α Satellite Repeat Primers #4486. The amount of immunoprecipitated DNA in each sample is represented as signal relative to the total amount of input chromatin, which is equivalent to one.

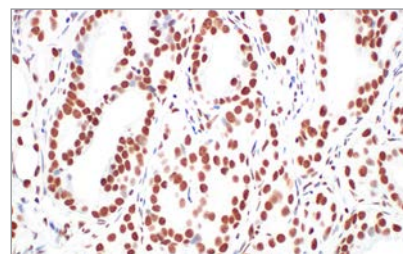




Cadherin-17 (E5J8Z) Rabbit mAb #85724

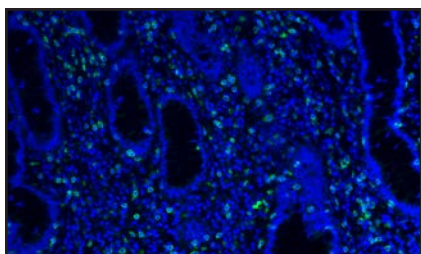


Cathepsin D (E5V4H) Rabbit mAb #74089

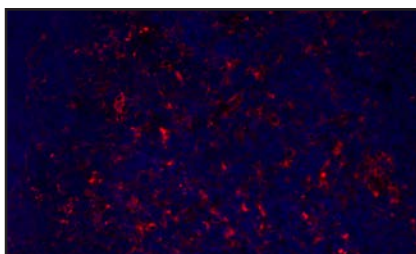


CBX7 (E7N1W) Rabbit mAb #34547

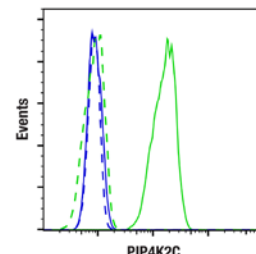
| PRODUCT | APPLICATIONS | REACTIVITY |
|---|--------------|------------------------------|
| Adhesion/ECM | | |
| 85724S Cadherin-17 (E5J8Z) Rabbit mAb | | WB, IHC-P |
| 74089S Cathepsin D (E5V4H) Rabbit mAb | | WB, IHC-P, IF-F, IF-IC |
| 15956S COL11A1 (E6X3Y) Rabbit mAb (Alexa Fluor® 488 Conjugate) | | FC-FP |
| 55400C PathScan® RP Phospho-FAK (Tyr397) Sandwich ELISA Kit | | ELISA |
| 26424S MT1-MMP (E3S5S) Rabbit mAb | | WB |
| 45547SF uPAR (D7X2N) Rabbit mAb (BSA and Azide Free) | | WB, IF-IC |
| 66798SF PODXL (E8OIS) Rabbit mAb (BSA and Azide Free) | | WB, IHC-P, IF-IC |
| 19325S STRIP1/FAM40A (E8J6I) Rabbit mAb | | WB |
| Apoptosis | | |
| 55302S Cleaved Caspase-3 (Asp175) (D3E9) Rabbit mAb (Alexa Fluor® 700 Conjugate) | | FC-FP |
| 17825SF Phospho-MLKL (Ser345) (D6E3G) Rabbit mAb (BSA and Azide Free) | | WB, IF-IC |
| Autophagy | | |
| 64055SF GABARAP (E1J4E) Rabbit mAb (BSA and Azide Free) | | WB, IF-IC |
| 37737SF GABARAPL1 (D5R9Y) XP® Rabbit mAb (BSA and Azide Free) | | WB, IF-IC, FC-FP |
| Cell Cycle / Checkpoint Control | | |
| 50799S BRCA1 (E5S9G) Rabbit mAb | | WB, IP, IHC-LB, IHC-P, IF-IC |
| 44110SF Ku80 (C48E7) Rabbit mAb (BSA and Azide Free) | | WB, IHC-P, IF-IC |
| 74736S Phospho-RRM2 (Thr33) Antibody | | WB, IP |
| 38589S STIL (E4U6R) Rabbit mAb | | WB |
| Chromatin Regulation / Nuclear Function | | |
| 20696S BRD4 Isoform C (E1Q9N) Rabbit mAb | | WB, IP, IF-IC, ChIP |
| 34547S CBX7 (E7N1W) Rabbit mAb | | WB, IHC-P, ChIP |
| 81662S CREST (E3P4F) Rabbit mAb | | WB, IP, IF-IC, ChIP |
| 48859SF CTCF (D31H2) XP® Rabbit mAb (BSA and Azide Free) | | WB, IHC-P, IF-F, IF-IC |
| Cytoskeletal Signaling | | |
| 77895C PathScan® RP Total DRP1 Sandwich ELISA Kit | | ELISA |
| 72246SF Filamin A (E8P8M) Rabbit mAb (BSA and Azide Free) | | WB, IHC-P, IF-F |
| 57376SF Gelsolin (D9W8Y) Rabbit mAb (BSA and Azide Free) | | WB, IHC-P |
| 32538S Vimentin (D21H3) XP® Rabbit mAb (Alexa Fluor® 532 Conjugate) | | FC-FP |
| Developmental Biology | | |
| 69914SF CD133 (D4W4N) XP® Rabbit mAb (BSA and Azide Free) | | WB, IHC-LB, IHC-P |
| 85650SF FoxP1 (D35D10) XP® Rabbit mAb (BSA and Azide Free) | | WB, IHC-P, FC-FP |
| 82314SF GAS6 (D3A3G) Rabbit mAb (BSA and Azide Free) | | WB, IHC-P, IF-IC |
| 17635SF Notch2 (D76A6) XP® Rabbit mAb (BSA and Azide Free) | | WB, IHC-P, IF-IC, FC-FP |
| 78954SF OCA-T1 (E4T1K) Rabbit mAb (BSA and Azide Free) | | WB, IHC-P |
| 58677SF Pax6 (D3A9V) XP® Rabbit mAb (BSA and Azide Free) | | WB, IHC-P, IF-IC |
| 36560S Sox2 (D9B8N) Rabbit mAb (Alexa Fluor® 488 Conjugate) | | IF-F, IF-IC, FC-FP |
| 34348S Sox2 (D9B8N) Rabbit mAb (Pacific Blue™ Conjugate) | | FC-FP |
| 70838SF SPARC (D10F10) Rabbit mAb (BSA and Azide Free) | | WB, IHC-P |
| 95633SF TEAD1 (D9X2L) Rabbit mAb (BSA and Azide Free) | | WB, IHC-P, IF-IC |



CD8α (D8A8Y) Rabbit mAb (Alexa Fluor® 488 Conjugate) #99924

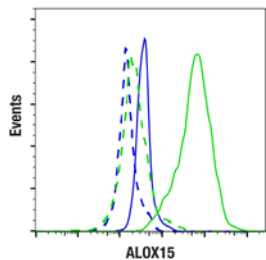


PD-L1 (D5V3B) Rabbit mAb (Alexa Fluor® 555 Conjugate) #76478

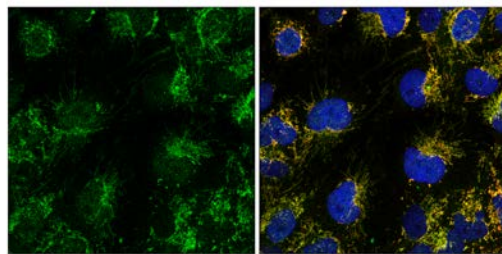


PIP4K2C (E7P3S) Rabbit mAb #61407

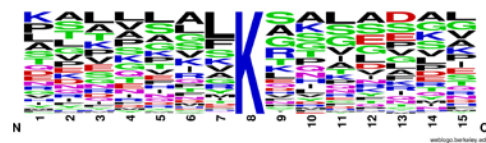
| PRODUCT | APPLICATIONS | REACTIVITY |
|------------------------------------|--|----------------------------|
| Immunology and Inflammation | | |
| 68711SF | BATF3 (E3F3L) Rabbit mAb (BSA and Azide Free) | WB, IHC-P |
| 86936S | CD3ε (D7A6E™) XP® Rabbit mAb (Alexa Fluor® 488 Conjugate) | IHC-P |
| 57869S | CD3ε (D7A6E™) XP® Rabbit mAb (Alexa Fluor® 555 Conjugate) | IHC-P |
| 10084S | CD5 (E6N9S) Rabbit mAb | WB, IHC-P |
| 99924S | CD8α (D8A8Y) Rabbit mAb (Alexa Fluor® 488 Conjugate) | IHC-P |
| 51435SF | CTLA-4 (E5S7E) Rabbit mAb (BSA and Azide Free) | IF-F |
| 59938S | CXCR4 (E9G2E) Rabbit mAb (Alexa Fluor® 488 Conjugate) | FC-L |
| 20523SF | Eosinophil cationic protein (E6U5M) Rabbit mAb (BSA and Azide Free) | WB, IHC-P |
| 27456S | FoxP3 (D6O8R) Rabbit mAb (Alexa Fluor® 555 Conjugate) | IF-F |
| 76229S | GILT (E3P1D) Rabbit mAb | WB |
| 51886S | Granzyme F (E2U7L) Rabbit mAb | WB, IF-F, FC-FP |
| 18915S | HLA-DRA (E9R2Q) XP® Rabbit mAb (Alexa Fluor® 488 Conjugate) | IHC-P |
| 29203S | HLA-DRA (E9R2Q) XP® Rabbit mAb (Alexa Fluor® 555 Conjugate) | IHC-P |
| 49314SF | IgM (E8M1B) XP® Rabbit mAb (BSA and Azide Free) | WB, IHC-P |
| 55751S | IgM (E9U8J) XP® Rabbit mAb (Biotinylated) | WB |
| 90321S | Ikaros (D6N9Y) Rabbit mAb (Alexa Fluor® 555 Conjugate) | FC-FP |
| 24787S | Ikaros (D6N9Y) Rabbit mAb (Alexa Fluor® 750 Conjugate) | FC-FP |
| 60012S | Ikaros (D6N9Y) Rabbit mAb (Pacific Blue™ Conjugate) | FC-FP |
| 33484SF | IL-18 (E3G8R) Rabbit mAb (BSA and Azide Free) | WB, IHC-P, FC-FP |
| 50546S | LRRC15 (E4X8J) Rabbit mAb | WB |
| 99900SF | LYVE-1 (E3L3V) Rabbit mAb (BSA and Azide Free) | WB, IF-F |
| 77137SF | β2-microglobulin (E8G2O) Rabbit mAb (BSA and Azide Free) | WB, IF-F, IF-IC, FC-FP |
| 61179S | NLRP10 (E5X5A) Rabbit mAb | WB, IP |
| 20490S | PD-L1 (D5V3B) Rabbit mAb (Alexa Fluor® 488 Conjugate) | IHC-P |
| 76478S | PD-L1 (D5V3B) Rabbit mAb (Alexa Fluor® 555 Conjugate) | IHC-P |
| 33275S | PD-L1 (D5V3B) Rabbit mAb (Alexa Fluor® 647 Conjugate) | IHC-P |
| 65090S | Perforin (IHC646) Mouse mAb | IHC-P |
| 61407S | PIP4K2C (E7P3S) Rabbit mAb | WB, IP, IF-F, IF-IC, FC-FP |
| 83382C | PathScan® RP Phospho-Stat2 (Tyr690) Sandwich ELISA Kit | ELISA |
| 75183C | PathScan® RP Total Stat5 Sandwich ELISA Kit | ELISA |
| 36939C | PathScan® RP Phospho-Stat5a (Tyr694) Sandwich ELISA Kit | ELISA |
| 24775S | Phospho-Stat6 (Tyr641) (D8S9Y) Rabbit mAb (Alexa Fluor® 700 Conjugate) | FC-FP |
| 52985S | RANK (E2N2Y) Rabbit mAb | WB, IP, IF-IC, FC-FP |
| 95116S | TIPE2 (E5Q2S) Rabbit mAb (Alexa Fluor® 488 Conjugate) | FC-FP |
| 19217S | UBASH3B (E1A8Y) Rabbit mAb | WB |
| MAP Kinase Signaling | | |
| 54488S | MEKK2 (E6C2G) Rabbit mAb | WB, IP |
| Metabolism | | |
| 82129S | ALOX15 (E5D1C) Rabbit mAb | WB, FC-FP |
| 81128SF | Asparagine Synthetase (E6C2C) XP® Rabbit mAb (BSA and Azide Free) | WB, IHC-P, FC-FP |



ALOX15 (E5D1C) Rabbit mAb #82129

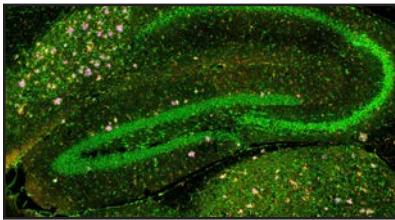


TIM23 (E1Q7L) Rabbit mAb #34822

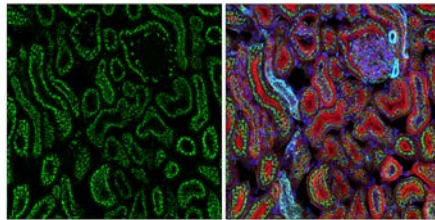


PTMScan® Mono-Methyl Lysine Motif (mme-K) Kit #16892

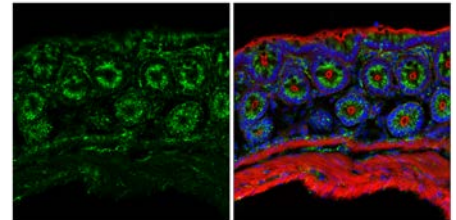
| PRODUCT | APPLICATIONS | REACTIVITY |
|---|-------------------------|--------------|
| Metabolism (cont.) | | |
| 46943SF C/EBPα (D56F10) XP [®] Rabbit mAb (BSA and Azide Free) | WB, IHC-P, IF-IC, FC-FP | H, M, (R) |
| 66058SF Fatty Acid Synthase (C20G5) Rabbit mAb (BSA and Azide Free) | WB, IHC-P, IF-IC | H, M, R, (B) |
| 16473S Gephyrin (E8T6V) Rabbit mAb | WB | H, M, R |
| 20752SF OLR1/LOX1 (E9C5A) Rabbit mAb (BSA and Azide Free) | WB, IHC-P | H |
| 58258S PSPH (E1D2X) Rabbit mAb | WB | H, M, R |
| 50340S PYGB (E3W5W) Rabbit mAb | WB, IP | H, M, R, Mk |
| 42103S PYGL (E4O1P) Rabbit mAb | WB, IP | H, M |
| 34822S TIM23 (E1Q7L) Rabbit mAb | WB, IF-IC | H, M, R |
| 60786SF UCP1 (E9Z2V) XP [®] Rabbit mAb (BSA and Azide Free) | WB, IHC-P, IF-F | M, R, (H) |
| Motif Antibodies | | |
| 16892S PTMScan® Mono-Methyl Lysine Motif (mme-K) Kit | PTMScan | - |
| Neuroscience | | |
| 26485SF AMPA Receptor 4 (GluA 4) (D41A11) XP [®] Rabbit mAb (BSA and Azide Free) | WB, IF-F | H, M, R |
| 82095SF β-Amyloid (1-42) (E6D5M) Rabbit mAb (BSA and Azide Free) | IHC-P, IF-F | H |
| 24138S Bassoon (D63B6) Rabbit mAb (Alexa Fluor [®] 647 Conjugate) | IF-F | M, R, (H) |
| 60239S CK1ε (E6K9V) Rabbit mAb | WB | H, M, R |
| 29663S FE65 (E4Y6C) Rabbit mAb | WB | H, M, R |
| 62953S NeuroD1 (E3E4F) Rabbit mAb | WB, IP, IF-F, IF-IC | H, M, R |
| 89529S Nestin (E5C7I) Rabbit mAb | WB, IHC-P, IF-F | M, R |
| 90605S NGF (E7O4E) Rabbit mAb | WB, IP | M |
| 62960S Parkin (E6B1P) Mouse mAb | WB | H, M, R |
| 61381T PICALM Signaling Antibody Sampler Kit | - | - |
| 33611S α-Synuclein (E4U2F) XP [®] Rabbit mAb (Alexa Fluor [®] 647 Conjugate) | IF-F | H, M, R |
| 79161SF α/β-Synuclein (Syn205) Mouse mAb (BSA and Azide Free) | WB, IHC-P, IF-F | H, M, R |
| 92574S TRIM46 (E4X9J) Rabbit mAb | WB | H, M, R |
| 47181S VGLUT1 (E8L5B) Rabbit mAb | WB, IHC-P, IF-F | H, M, R |
| PI3K / Akt Signaling | | |
| 47059S Akt (pan) (T1E7) Rabbit mAb (Alexa Fluor [®] 488 Conjugate) | FC-FP | H, M, R, Mk |
| 36292S Akt (pan) (T1E7) Rabbit mAb (Alexa Fluor [®] 647 Conjugate) | FC-FP | H, M, R, Mk |
| 80556S Phospho-Akt (Thr308) (D25E6) XP [®] Rabbit mAb (Pacific Blue™ Conjugate) | FC-FP | H, M, R, Mk |
| Protein Folding and Trafficking | | |
| 94838S FKBP1A/FKBP12 (E8H7Y) Rabbit mAb | WB | H, M, R |
| 70767S GM130 (E9Z6S) Rabbit mAb | WB, IF-F, IF-IC | M, R |
| 16142S HSP20 (E9Z1O) Rabbit mAb | WB, IP, IF-F, IF-IC | H, M, R |
| 43069S Intersectin-2 (E5J9F) Rabbit mAb | WB, IP | H, M, R |
| 34141S LAMP2 (E6A6S) Rabbit mAb | WB, IF-F, IF-IC | M |
| 80797SF PDI (C81H6) Rabbit mAb (BSA and Azide Free) | WB, IHC-P, IF-IC | H, M, R, Mk |
| 94213S Rab9A (E213T) Mouse mAb | WB | H, M, R, Mk |
| RTK | | |
| 71991S DDR2 (E5S1S) Rabbit mAb | WB, IP | H, M, R |



PICALM Signaling Antibody Sampler Kit #61381



GM130 (E9Z6S) Rabbit mAb #70767



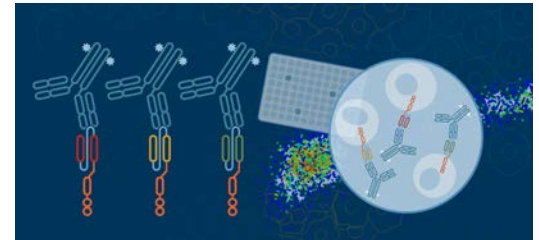
LAMP2 (E6A6S) Rabbit mAb #34141

| PRODUCT | APPLICATIONS | REACTIVITY |
|--|-------------------------|-------------|
| Translational Control | | |
| 90782S CPEB4 (E7X2G) Rabbit mAb | WB, IP | H, M, R, Mk |
| Ubiquitin and Ubiquitin-like proteins | | |
| 46351SF CRBN (D8H3S) Rabbit mAb (BSA and Azide Free) | WB, IHC-P | H, M, R |
| 95000SF Skp2 (D3G5) XP [®] Rabbit mAb (BSA and Azide Free) | WB, IHC-P, IF-IC | H, Mk |
| Related Products | | |
| 33542S 3X DYKDDDDK Tag (E2T2) Mouse mAb (Binds to same epitope as Sigma's Anti-FLAG M2 Antibody) | WB, IP, IF-IC | All |
| 18112S Cas9 (S. pyogenes) (E7M1H) XP [®] Rabbit mAb (Alexa Fluor [®] 488 Conjugate) | FC-FP | All |
| 79989S His-Tag (D3I1O) XP [®] Rabbit mAb (Alexa Fluor [®] 700 Conjugate) | FC-FP | All |
| 96334S His-Tag (D3I1O) XP [®] Rabbit mAb (Magnetic Bead Conjugate) | IP | All |
| 51875S Myc-Tag (71D10) Rabbit mAb (Pacific Blue [™] Conjugate) | FC-FP | All |
| 58730SF Myc-Tag (9B11) Mouse mAb (BSA and Azide Free) | WB, IHC-P, IF-IC, FC-FP | All |

First-to-Market CAR Detection Reagents for CAR-T Research: Anti-CAR Linker mAbs

CST[®] anti-CAR linker antibodies won The Innovation Award from CiteAb in 2023.

First-to-market anti-CAR linker antibodies can be a versatile detection reagent that could identify and confirm the presence of your CAR, regardless of its antigen specificity. View below for a full list of products.



| PRODUCT | APPLICATIONS | REACTIVITY |
|--|--------------|------------|
| Immunology and Inflammation | | |
| 71645S G4S Linker (E7O2V) Rabbit mAb | FC-L | All |
| 63670S G4S Linker (E7O2V) Rabbit mAb (BSA and Azide Free) | FC-L | All |
| 50515S G4S Linker (E7O2V) Rabbit mAb (Alexa Fluor [®] 488 Conjugate) | FC-L | All |
| 90841S G4S Linker (E7O2V) Rabbit mAb (Alexa Fluor [®] 532 Conjugate) | FC-L | All |
| 18862S G4S Linker (E7O2V) Rabbit mAb (Alexa Fluor [®] 555 Conjugate) | FC-L | All |
| 39614S G4S Linker (E7O2V) Rabbit mAb (Alexa Fluor [®] 594 Conjugate) | FC-L | All |
| 69782S G4S Linker (E7O2V) Rabbit mAb (Alexa Fluor [®] 647 Conjugate) | FC-L | All |
| 40107S G4S Linker (E7O2V) Rabbit mAb (Alexa Fluor [®] 700 Conjugate) | FC-L | All |
| 17621S G4S Linker (E7O2V) Rabbit mAb (Biotinylated) | FC-L | All |
| 38907S G4S Linker (E7O2V) Rabbit mAb (PE Conjugate) | FC-L | All |
| 57710S Whitlow/218 Linker (E3U7Q) Rabbit mAb | FC-L | All |
| 66159S Whitlow/218 Linker (E3U7Q) Rabbit mAb (BSA and Azide Free) | FC-L | All |
| 55809S Whitlow/218 Linker (E3U7Q) Rabbit mAb (Alexa Fluor [®] 488 Conjugate) | FC-L | All |
| 25186S Whitlow/218 Linker (E3U7Q) Rabbit mAb (Alexa Fluor [®] 532 Conjugate) | FC-L | All |
| 85651S Whitlow/218 Linker (E3U7Q) Rabbit mAb (Alexa Fluor [®] 555 Conjugate) | FC-L | All |
| 61465S Whitlow/218 Linker (E3U7Q) Rabbit mAb (Alexa Fluor [®] 594 Conjugate) | FC-L | All |
| 69310S Whitlow/218 Linker (E3U7Q) Rabbit mAb (Alexa Fluor [®] 647 Conjugate) | FC-L | All |
| 72160S Whitlow/218 Linker (E3U7Q) Rabbit mAb (Alexa Fluor [®] 700 Conjugate) | FC-L | All |
| 32523S Whitlow/218 Linker (E3U7Q) Rabbit mAb (Biotinylated) | FC-L | All |
| 62405S Whitlow/218 Linker (E3U7Q) Rabbit mAb (PE Conjugate) | FC-L | All |

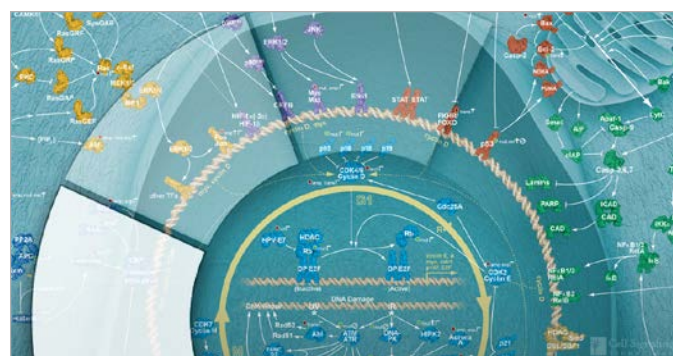
What's New at CST



Parkinson's Disease Resources

CST has partnered with The Michael J. Fox Foundation for Parkinson's Research (MJFF). Visit the new Parkinson's Disease Resource Center to learn more about our partnership with MJFF and explore scientific resources and the latest antibody tools to drive your PD research forward.

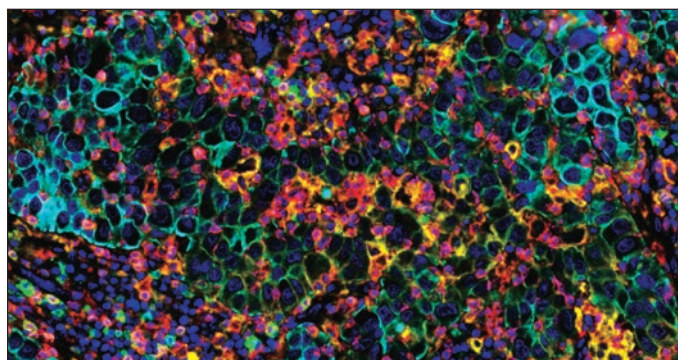
cst-science.com/Q3-2023-info1



eBook: The Hallmarks of Cancer Research Targets

This eBook focuses on the seminal contribution made by Dr. Robert Weinberg and Dr. Douglas Hanahan on "The Hallmarks of Cancer," breaking down the complexity of cancer into ten underlying principles and including key research targets.

cst-science.com/Q3-2023-info2



Solutions for Oncology Therapeutic Discovery

Accelerate drug discovery and development with solutions aligned to your workflows, platforms and technologies, and oncology research. This resource page provides information on targets that could lead to new and more efficacious therapies.

cst-science.com/Q3-2023-info3



Targeting Proteomics for Drug Development

This webinar will provide an overview of how mass spectrometry-based proteomics can be used for drug discovery and development.

cst-science.com/Q3-2023-info4

For Research Use Only. Not for Use in Diagnostic Procedures.

© 2023 Cell Signaling Technology, Inc. CST, Cell Signaling Technology, and XP are registered trademarks of Cell Signaling Technology, Inc. All other trademarks are the property of their respective owners. Visit cellsignal.com/trademarks for more information. 23-PRG-68450-EN

cellsignal.com/newproducts

 **Cell Signaling**
TECHNOLOGY®