



# New Products

NOVEMBER 2023

We are continually expanding our portfolio to meet your research needs. *Check out* the new products released this month!

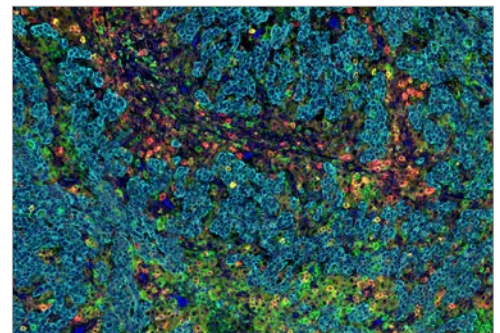
## HOT PRODUCTS

### SignalStar™ Multiplex IHC

#### Spatial Biology Result 70% Faster

SignalStar Multiplex IHC uses antibodies, oligonucleotides, and fluorophores to interrogate cellular presence, location, function, and biomarker co-expression patterns. It reduces the weeks or months spent on panel optimization and validation to two days and detects multiple targets simultaneously in FFPE tissue with flexible, highly validated antibody panels.

**KEYWORDS:** multiplex immunohistochemistry, mIHC, spatial biology



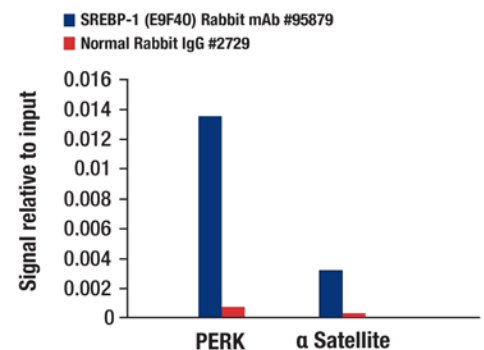
**SignalStar mIHC:** SignalStar mIHC analysis of paraffin-embedded human gastric adenocarcinoma using CD16 (D1N9L) & CO-0031-488 SignalStar™ Oligo-Antibody Pair #29967 (green), Phospho-SLP-76 (Ser376) (E3G9U) & CO-0018-594 SignalStar™ Oligo-Antibody Pair #53299 (yellow), ICOS (D1K2T™) & CO-0027-647 SignalStar™ Oligo-Antibody Pair #24147 (red), Pan-Keratin (C11) & CO-0003-750 SignalStar™ Oligo-Antibody Pair #97227 (cyan), and ProLong Gold Antifade Reagent with DAPI #8961 (blue). All fluorophores have been assigned a pseudocolor, as indicated.

### SREBP-1 (E9F4O) Rabbit mAb #95879

#### Master Regulator of Lipid Synthesis

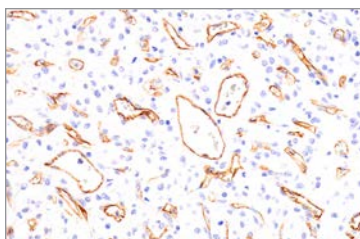
SREBPs are bHLH-Zip transcription factors. Inactive precursor forms of SREBPs are bound to endoplasmic reticulum (ER) membranes. When cells are starved for sterols, SREBPs move from the ER to the Golgi apparatus with the help of SCAP. In the Golgi apparatus, precursor SREBPs are then sequentially cleaved by two proteases, S1P and S2P. The released N-terminal domain that contains the bHLH-Zip region enters the nucleus and binds to SREs in the promoters of a variety of genes responsible for the synthesis of cholesterol, fatty acids, and other lipids, activating their expressions. Studies show that SREBP-1-dependent fatty acid homeostasis has a critical role in promoting the pro-tumor phenotype of M2-like tumor-associated macrophages, and inhibition of SREBP-1 enhances the efficacy of immune checkpoint blockade.

**KEYWORDS:** lipid synthesis, immune checkpoint, cancer

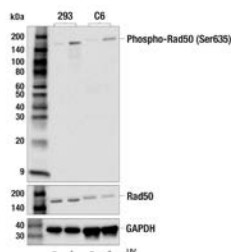


**ChIP:** ChIP were performed with cross-linked chromatin from Saos-2 cells, treated with tunicamycin (10 µg/mL, 12 hr), and either #95879 or Normal Rabbit IgG #2729, using SimpleChIP® Plus Enzymatic Chromatin IP Kit (Magnetic Beads) #9005. The enriched DNA was quantified by real-time PCR, using human PERK promoter primers and SimpleChIP® Human a Satellite Repeat Primers #4486. The amount of immunoprecipitated DNA in each sample is represented as signal relative to the total amount of input chromatin, which is equivalent to one.

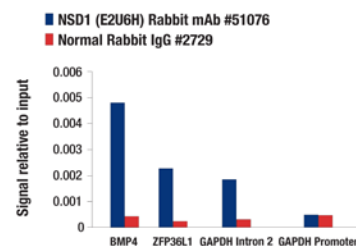




EMCN (E3Z4D) Rabbit mAb #96380

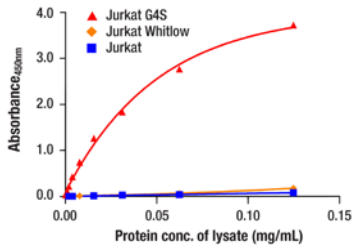


Phospho-Rad50 (Ser635) Antibody #74778

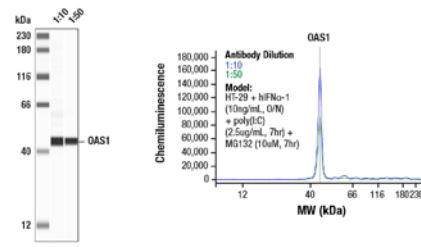


NSD1 (E2U6H) Rabbit mAb #51076

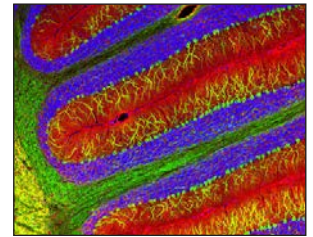
PRODUCT	APPLICATIONS	REACTIVITY
<b>Adhesion/ECM</b>		
<b>81945S</b> CEACAM7 (E5Q6X) Rabbit mAb	WB, IHC-P	H
<b>96380S</b> EMCN (E3Z4D) Rabbit mAb	WB, IP, IHC-P	H
<b>93757S</b> MAdCAM-1 (E1V8F) Rabbit mAb	WB, IHC-P	H
<b>50160SF</b> MUC1-C (D5K9I) XP® Rabbit mAb (BSA and Azide Free)	WB, IHC-P, IF-IC	H
<b>48087S</b> NCAM1 (CD56) (E7X9M) XP® Rabbit mAb (Alexa Fluor® 488 Conjugate)	IHC-P	H, M, R, Mk
<b>50831S</b> NCAM1 (CD56) (E7X9M) XP® Rabbit mAb (Alexa Fluor® 647 Conjugate)	IHC-P, IF-F, IF-IC	H, M, R, Mk
<b>75587SF</b> OLFM4 (D1E4M) XP® Rabbit mAb (BSA and Azide Free)	WB, IHC-P	H
<b>96489S</b> Syndecan 1 (E7F7T) Rabbit mAb	IHC-P, FC-FP, FC-L	H
<b>Apoptosis</b>		
<b>32112S</b> Cleaved Gasdermin D (Gly276) (E9U7H) Rabbit mAb	WB, IP, FC-FP	H
<b>82077S</b> Cleaved PARP (Asp214) Matched Antibody Pair	ELISA	H, M
<b>47393S</b> Phospho-RIP (Ser166) Matched Antibody Pair	ELISA	H, M
<b>Autophagy</b>		
<b>18582S</b> FKBP8 (E6F3T) Rabbit mAb	WB, IP	H, M
<b>Ca, cAMP and Lipid Signaling</b>		
<b>47342S</b> GNAS/Gas (E4G1G) Rabbit mAb	WB	H, M, R
<b>31181SF</b> MARCKS (D88D11) XP® Rabbit mAb (BSA and Azide Free)	WB, IHC-P, IF-IC, FC-FP	H, Mk
<b>66279S</b> S100A10 (E4H1Q) Rabbit mAb	WB, IP	H, M
<b>Cell Cycle / Checkpoint Control</b>		
<b>41333C</b> PathScan® RP Phospho-Aurora A (Thr288) Sandwich ELISA Kit	ELISA	H
<b>91865SF</b> DNA-PKcs (3H6) Mouse mAb (BSA and Azide Free)	WB, IHC-P, IF-IC	H, Mk
<b>48160S</b> DNA Polymerase θ (POLQ) (I53-5-1) Mouse mAb	WB, IP	M
<b>24179S</b> FAMI22A (E3X4R) Rabbit mAb	WB, IP	H, M, R
<b>52601S</b> Haspin (E7V4I) Rabbit mAb	WB	H, M, R
<b>30420S</b> Total Ki-67 Matched Antibody Pair	ELISA	H, Mk
<b>87795S</b> NEK7 (E4E1B) Rabbit mAb	WB, IP	H, M, R
<b>85118SF</b> PCNA (PC10) Mouse mAb (BSA and Azide Free)	WB, IHC-P, IF-IC, FC-FP	H, M, R, Mk, B, Pg
<b>74778S</b> Phospho-Rad50 (Ser635) Antibody	WB, IP	H, R
<b>Chromatin Regulation / Nuclear Function</b>		
<b>94032S</b> BRD3 (E3D5N) Rabbit mAb	WB, IP, ChIP	H, Mk
<b>47415S</b> CUT&Tag Dual Index Primers and PCR Master Mix for Illumina Systems	C&T	All
<b>79561S</b> CUT&tag pAG-Tn5 (Loaded)	C&T	All
<b>63228S</b> CUT&tag PCR Master Mix	C&T	All
<b>64733S</b> MED17 (E3V6Y) Rabbit mAb	WB, IP, ChIP	H, M, R, Mk
<b>51076S</b> NSD1 (E2U6H) Rabbit mAb	WB, ChIP	H, M
<b>93629S</b> Phospho-Histone H2A.X (Ser139) (D7T2V) Mouse mAb (Pacific Blue™ Conjugate)	FC-FP	H, M, R, Mk
<b>99333SF</b> Acetyl-Histone H2B (Lys5) (D5H1S) XP® Rabbit mAb (BSA and Azide Free)	WB, IHC-P, IF-IC	H, M, R, Mk, (Hm, C, Z, B, Hr)
<b>80806SF</b> Di-Methyl-Histone H3 (Lys9) (D85B4) XP® Rabbit mAb (BSA and Azide Free)	WB, IF-IC, FC-FP	H, M, R, Mk, (Dm, X, Z, B, Pg, Sc, Ce)
<b>27613S</b> Crotonyl-Histone H3 (Lys14) (E9X3B) Rabbit mAb	WB, ChIP	H, M, R, Mk
<b>76466SF</b> Mono-Methyl-Histone H3 (Lys36) (D9J1D) Rabbit mAb (BSA and Azide Free)	WB, IF-IC, FC-FP	H, M, R, Mk, (Hm, B)



PathScan® RP G4S Linker/CD3ζ CAR Sandwich ELISA Kit #20418



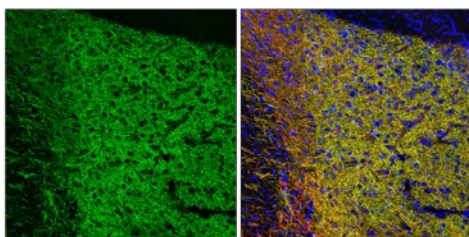
OAS/RNase L Pathway Antibody Sampler Kit #60125



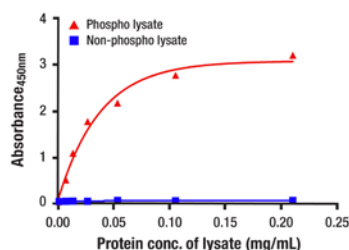
Immature Neuron Marker Antibody Sampler Kit #38554

PRODUCT	APPLICATIONS	REACTIVITY
<b>Chromatin Regulation / Nuclear Function (cont.)</b>		
<b>42396SF</b> Histone H4 (L64C1) Mouse mAb (BSA and Azide Free)	WB, IHC-P	H, M, R, Mk, (Dm, X, Z, B, Ce, Hr)
<b>37286SF</b> Acetyl-Histone H4 (Lys16) (E2B8W) Rabbit mAb (BSA and Azide Free)	WB, IF-IC, FC-FP	H, M, R, Mk
<b>28716S</b> SRCAP (E9V8O) Rabbit mAb	WB, IP, ChIP	H, Mk
<b>40142S</b> TET1 (E5F1O) Rabbit mAb	WB, ChIP	H, M, Mk
<b>80303S</b> YTHDF3 (E2J9I) Rabbit mAb	WB, IP, IF-F, IF-IC	H, M, R, Mk
<b>Cytoskeletal Signaling</b>		
<b>89989C</b> PathScan® RP Phospho-DRP1 (Ser616) Sandwich ELISA Kit	ELISA	H, M, R
<b>53726S</b> Phospho-GRASP55/GORASP2 (Thr264) Antibody	WB	H
<b>62490C</b> PathScan® RP Acetyl-α-Tubulin (Lys40) Sandwich ELISA Kit	ELISA	H, M, R
<b>Developmental Biology</b>		
<b>68076SF</b> Phospho-β-Catenin (Ser675) (D2F1) XP® Rabbit mAb (BSA and Azide Free)	WB, IF-F, IF-IC	H, M, R, (C, X, Z)
<b>80121SF</b> Slug (C19G7) Rabbit mAb (BSA and Azide Free)	WB, IF-IC, FC-FP	H, M
<b>67959SF</b> Phospho-SMAD1 (Ser463/465)/ SMAD5 (Ser463/465)/SMAD9 (Ser465/467) (D5B1O) Rabbit mAb (BSA and Azide Free)	WB, IF-IC, FC-FP	H, M, R, (Mk)
<b>52937SF</b> Phospho-SMAD1/5 (Ser463/465) (41D1O) Rabbit mAb (BSA and Azide Free)	WB, IF-IC, FC-FP	H, M, R
<b>83065SF</b> Smad2 (D43B4) XP® Rabbit mAb (BSA and Azide Free)	WB, IF-IC, FC-FP	H, M, R, Mk
<b>68007SF</b> RUNX2 (D1L7F) Rabbit mAb (BSA and Azide Free)	WB, IF-IC, FC-FP	H, M, R
<b>62283S</b> TCF1/TCF7 (E6O1K) Rabbit mAb (Pacific Blue™ Conjugate)	FC-FP	H, M, R
<b>19428SF</b> Thyroid Transcription Factor 1 (TTF-1) (D2E8) Rabbit mAb (BSA and Azide Free)	WB, IF-F, IF-IC	H, M, R, (Mk)
<b>Immunology and Inflammation</b>		
<b>39815SF</b> CD5 (E6N9S) Rabbit mAb (BSA and Azide Free)	WB, IHC-P	M
<b>81297SF</b> CD6 (E9Q1V) Rabbit mAb (BSA and Azide Free)	WB, IHC-P	M
<b>64675S</b> CD11c (D1V9Y) Rabbit mAb (Alexa Fluor® 555 Conjugate)	IHC-P, IF-F, IF-IC	M
<b>88204S</b> CD11c (D1V9Y) Rabbit mAb (Alexa Fluor® 647 Conjugate)	IHC-P, IF-F, IF-IC	M
<b>37518S</b> CD14 (D7A2T) Rabbit mAb (Alexa Fluor® 488 Conjugate)	IHC-P	H
<b>95166S</b> CD14 (D7A2T) Rabbit mAb (Alexa Fluor® 555 Conjugate)	IHC-P	H, Mk
<b>33676S</b> CD14 (D7A2T) Rabbit mAb (Alexa Fluor® 647 Conjugate)	IHC-P	H, Mk
<b>78318S</b> CD20 (E7B7T) XP® Rabbit mAb (Alexa Fluor® 488 Conjugate)	IHC-P	H, Mk
<b>81546S</b> CD20 (E7B7T) XP® Rabbit mAb (Alexa Fluor® 555 Conjugate)	IHC-P	H, Mk
<b>83399S</b> CD20 (E7B7T) XP® Rabbit mAb (Alexa Fluor® 647 Conjugate)	IHC-P	H, Mk
<b>26230S</b> CD38 (E7Z8C) XP® Rabbit mAb (Alexa Fluor® 488 Conjugate)	IHC-P	H
<b>48612S</b> CD38 (E7Z8C) XP® Rabbit mAb (Alexa Fluor® 555 Conjugate)	IHC-P	H
<b>88061S</b> CD38 (E7Z8C) XP® Rabbit mAb (Alexa Fluor® 647 Conjugate)	IHC-P	H
<b>83528SF</b> CD47 (E2V9V) Rabbit mAb (BSA and Azide Free)	WB, IHC-P	M
<b>78881SF</b> CD62L/L-Selectin (E7L2M) Rabbit mAb (BSA and Azide Free)	WB, IHC-P	M
<b>57717S</b> CD141/Thrombomodulin (E7Y9P) XP® Rabbit mAb (Alexa Fluor® 488 Conjugate)	IHC-P	H
<b>71411S</b> CD163 (D6U1J) Rabbit mAb (Alexa Fluor® 488 Conjugate)	IHC-P	H, Mk
<b>90431S</b> CD163 (D6U1J) Rabbit mAb (Alexa Fluor® 555 Conjugate)	IHC-P	H, Mk
<b>39093S</b> CD163 (D6U1J) Rabbit mAb (Alexa Fluor® 647 Conjugate)	IHC-P	H, Mk
<b>81707S</b> Cox2 (D5H5) XP® Rabbit mAb (Alexa Fluor® 647 Conjugate)	IF-IC, FC-FP	H, M, R
<b>44962S</b> G4S Linker (E7O2V) Rabbit mAb (Pacific Blue™ Conjugate)	FC-L	All

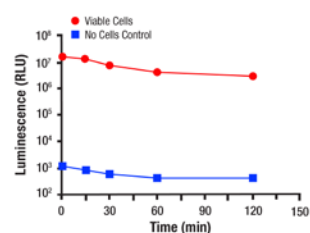
PRODUCT	APPLICATIONS	REACTIVITY
<b>Immunology and Inflammation (cont.)</b>		
<b>20418C</b> PathScan® RP G4S Linker/CD3ζ CAR Sandwich ELISA Kit	ELISA	All
<b>77885S</b> IFI44L (E7A9V) Rabbit mAb	WB, IP	H
<b>94264SF</b> IgM (E9U8J) XP® Rabbit mAb (BSA and Azide Free)	WB, IHC-LB, IHC-P	H
<b>51221S</b> KLF2 (E7K8Y) Rabbit mAb	WB, IP, IHC-P, IF-IC, FC-FP	H
<b>49830SF</b> Langerin (D9H7R) XP® Rabbit mAb (BSA and Azide Free)	WB, IF-IC, FC-FP	H
<b>37458S</b> Phospho-Lck (Tyr505) (E3Z5E) Rabbit mAb	WB	H, M, R
<b>72099S</b> LIME1 (E3M3B) Rabbit mAb	WB, IP	H
<b>29775C</b> PathScan® RP Lysozyme C Sandwich ELISA Kit	ELISA	H
<b>99395S</b> MBL (E2F7B) Rabbit mAb	WB	H, M
<b>78764S</b> Phospho-NF-κB p65 (Ser529) (E3K3J) Rabbit mAb	WB, IP, IF-IC, FC-FP	H
<b>71254S</b> Phospho-NF-κB p65 (Ser529) (E3K3J) Rabbit mAb (ChIP Formulated)	ChIP	H
<b>58142S</b> NRROS (E4B2D) Rabbit mAb	WB, IP	H
<b>60125T</b> OAS/RNase L Pathway Antibody Sampler Kit	–	–
<b>73485SF</b> SerpinB1 (E4W7B) Rabbit mAb (BSA and Azide Free)	WB, IHC-P	H
<b>69619S</b> Phospho-SLP-76 (Ser376) Matched Antibody Pair	ELISA	H, M
<b>82370S</b> Phospho-SLP-76 (Ser376) Matched Antibody Pair	ELISA	H
<b>57216S</b> Phospho-Stat1 (Tyr701) (58D6) Rabbit mAb (Alexa Fluor® 532 Conjugate)	FC-FP	H, M
<b>72501S</b> Phospho-Stat1 (Tyr701) Matched Antibody Pair	ELISA	H, M
<b>82798S</b> Phospho-Stat1 (Tyr701) Matched Antibody Pair	ELISA	H
<b>67229S</b> Phospho-Stat1 (Ser727) Matched Antibody Pair	ELISA	H, Mk
<b>58064S</b> Phospho-Stat3 (Tyr705) Matched Antibody Pair	ELISA	H, M, R, Mk
<b>99885S</b> Phospho-Stat3 (Ser727) Matched Antibody Pair	ELISA	H, M, R, Mk
<b>17495S</b> Phospho-Stat6 (Tyr641) Matched Antibody Pair	ELISA	H
<b>62917S</b> Phospho-STING (Ser366) Matched Antibody Pair	ELISA	H
<b>99379S</b> Phospho-Syk (Tyr352) Matched Antibody Pair	ELISA	H
<b>28841S</b> Phospho-Syk (Tyr525/526) Matched Antibody Pair	ELISA	H
<b>82871S</b> Phospho-Syk (panTyr) Matched Antibody Pair	ELISA	H
<b>57485SF</b> TNF-α (D2D4) XP® Rabbit mAb (BSA and Azide Free)	WB, IP, IF-IC, FC-FP	M
<b>27599S</b> UBASH3B (E7Y2R) Rabbit mAb	WB, IP	H, M, R
<b>72378C</b> PathScan® RP Whitlow/218 Linker/CD3ζ CAR Sandwich ELISA Kit	ELISA	All
<b>Infectious Diseases</b>		
<b>16435S</b> HCoV-OC43 Spike Protein (E4U6P) Rabbit mAb	WB	Vir
<b>MAP Kinase Signaling</b>		
<b>75266SF</b> Phospho-p90RSK (Ser380) (D5D8) Rabbit mAb (BSA and Azide Free)	WB, FC-FP	H, M, R, Mk, (C, X, Z, B, Dg, Pg, Hr)
<b>87933S</b> Phospho-PFAS (Thr619) Antibody	WB	H
<b>Metabolism</b>		
<b>98840S</b> Phospho-AMPKα1 (Ser356)/AMPKα2 (Ser345) Antibody	WB	H, M, R
<b>35298S</b> Arginase-1 (D4E3M™) XP® Rabbit mAb (Alexa Fluor® 555 Conjugate)	IF-F	H, M, R
<b>45404SF</b> C-Peptide (E7U7F) XP® Rabbit mAb (BSA and Azide Free)	IHC-P	H
<b>52552S</b> CPT2 (E7D4W) Rabbit mAb	WB	H, M, R
<b>40036S</b> ENPP1 (E4I2P) Rabbit mAb	WB	M, R
<b>73612S</b> ENTPD5 (E5U3V) Rabbit mAb	WB, IHC-P	H, (M, R)
<b>83718T</b> Glutamine Metabolism Antibody Sampler Kit	–	–
<b>97661SF</b> IGF-1 Receptor β (D23H3) XP® Rabbit mAb (BSA and Azide Free)	WB, IF-IC, FC-FP	H, M, R, Mk
<b>74683S</b> MTAP (E5R1I) Rabbit mAb	WB, IHC-P	H, M, R
<b>59757S</b> Osteocalcin (E8B9X) Rabbit mAb	WB, IHC-P	H, M
<b>70886S</b> PhosphoPlus® Sin1 (Thr86) Antibody Duet	–	–
<b>95879S</b> SREBP-1 (E9F4O) Rabbit mAb	WB, ChIP	H
<b>66401SF</b> Tom20 (D8T4N) Rabbit mAb (BSA and Azide Free)	WB, IP, IHC-P, IF-IC	H, M, R, Mk
<b>88630S</b> UPP1 (E6Y2B) Rabbit mAb	WB, IP	H, M, R, Mk



Dopamine Transporter/DAT (E3U7R) Rabbit mAb #24029



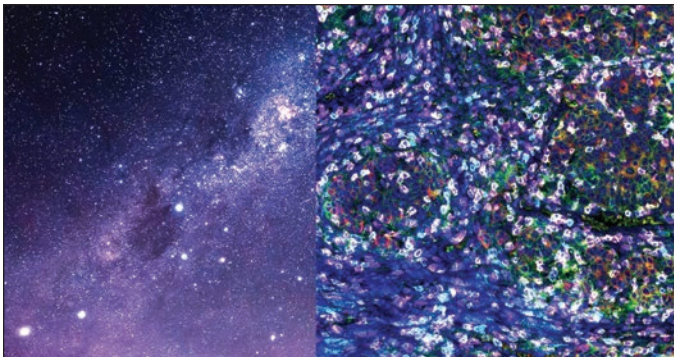
Phospho-HER2/ErbB2 (panTyr) Matched Antibody Pair #99159



Firefly Luciferase ATP Assay Kit #28854

PRODUCT	APPLICATIONS	REACTIVITY
<b>Neuroscience</b>		
92438S Phospho-AAK1 (Ser637/Thr640) Antibody	WB	H, M, R
84802S Total CREB Matched Antibody Pair	ELISA	H, M, R, Mk
26031SF DARPP-32 (19A3) Rabbit mAb (BSA and Azide Free)	WB, IHC-P, IHC-F	M, R, (H)
24029S Dopamine Transporter/DAT (E3U7R) Rabbit mAb	IF-F	M
33663S HEXB (E9X5S) Rabbit mAb	WB, IHC-P, IF-F, IF-IC	M, R
38554T Immature Neuron Marker Antibody Sampler Kit	—	—
20274S Phospho-NMDA Receptor 2B (GluN2B) (Ser1303) (E3E9I) Rabbit mAb	WB	M, R, (H)
64274S Stathmin-4 (E9F1Y) Rabbit mAb	WB, IP, IHC-P	H, M, R
51412S TPPP/p25 (E7F8S) Rabbit mAb	WB, IP	H, M, R
17843S TPPP/p25 (E9C8G) Rabbit mAb	IF-F	M
95339S VAPB (E7R3Z) Rabbit mAb	WB, IF-F, IF-IC	H, M, R
44498S VGAT Antibody	WB, IF-F	M, R
<b>Nuclear Receptor Signaling</b>		
59153SF Progesterone Receptor A/B (C89F7) Rabbit mAb (BSA and Azide Free)	WB, IHC-P	H
54721SF Vitamin D3 Receptor (D2K6W) Rabbit mAb (BSA and Azide Free)	WB, IHC-P	H, M, (Hm, B, Pg, Hr)
<b>PI3K / Akt Signaling</b>		
89489S Phospho-Akt (Thr308) Matched Antibody Pair	ELISA	H, M
52240S Phospho-Akt (Ser473) (D9E) XP <sup>®</sup> Rabbit mAb (Alexa Fluor <sup>®</sup> 555 Conjugate)	FC-FP	H, M, R, Hm, Mk, Dm, Z, B, (C, X, Dg, Pg)
77574S Total Akt1 Matched Antibody Pair	ELISA	H, M, R, Mk
16055S Phospho-Akt1 (Ser473) Matched Antibody Pair	ELISA	H, M, R, Mk
91411S Total Akt2 Matched Antibody Pair	ELISA	H, M
42495S Phospho-Akt2 (Ser474) Matched Antibody Pair	ELISA	H, M
32328S Total Akt3 Matched Antibody Pair	ELISA	M
37653SF GSK-3β (D5C5Z) XP <sup>®</sup> Rabbit mAb (BSA and Azide Free)	WB, IHC-P, IF-IC, FC-FP	H, M, R, Mk
96446S Phospho-SRPK2 (Ser497) (E5T6B) Rabbit mAb	WB, IP	H, M, R, Mk
<b>Protein Folding and Trafficking</b>		
65907C PathScan <sup>®</sup> RP ACE2 Sandwich ELISA Kit	ELISA	H
24348SF HSP70 (D1M6J) Mouse mAb (BSA and Azide Free)	WB, IHC-P	H
26099S LZTFL1 (E9R7T) Rabbit mAb	WB, IP, IHC-P	H, M, R
<b>RTK</b>		
18554S Axl (E3Z2H) Rabbit mAb	WB, IHC-P	H, M, R
67303C PathScan <sup>®</sup> Phospho-c-Kit (Tyr703) Sandwich ELISA Kit	ELISA	H
16662SF Phospho-EphA2 (Ser897) (D9A1) Rabbit mAb (BSA and Azide Free)	WB, IHC-P	H, M, (R)
99159S Phospho-HER2/ErbB2 (panTyr) Matched Antibody Pair	ELISA	H
<b>Translational Control</b>		
37881S GW182 (E4C7J) Rabbit mAb	WB, IP	H, M, Mk
62928SF eIF2α (D7D3) XP <sup>®</sup> Rabbit mAb (BSA and Azide Free)	WB, IHC-P	H, M, R, Mk
84599SF NRF2 (D1Z9C) XP <sup>®</sup> Rabbit mAb (BSA and Azide Free)	WB, IF-IC, FC-FP	H, M, Mk
68862S SF3B4 (E7R4H) Rabbit mAb	WB, IP	H, M, R, Mk
<b>Related Products</b>		
28854S Firefly Luciferase ATP Assay Kit	FUNC	—

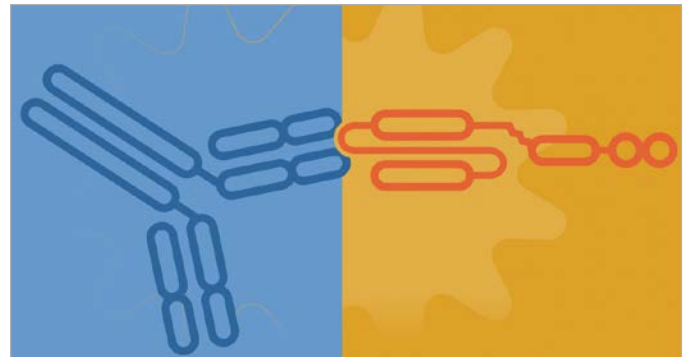
# What's New at CST



## SignalStar™ Multiplex IHC for Spatial Biology

Download the brochure and learn how SignalStar™ Multiplex IHC for spatial biology lets you see multiple targets in FFPE tissues simultaneously with flexible, highly validated antibody panels—letting you focus on results. Image up to 8 targets in just 2 days!

[cst-science.com/Q4-2023-info1](https://cst-science.com/Q4-2023-info1)



## CAR-T Resources

Learn how to identify and confirm CAR expression in your immunotherapy research with first-to-market antibodies that recognize a broad range of CARs, regardless of antigen specificity.

[cst-science.com/Q4-2023-info2](https://cst-science.com/Q4-2023-info2)



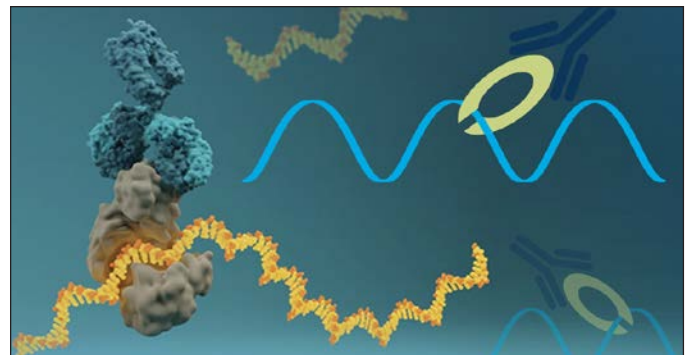
## CST® Antibodies Validated for Simple Western

**CST Antibodies Validated for Simple Western:** Simply dilute the antibody to the recommended dilution, then run your standard Simple Western protocol. From traditional, to fluorescent, and now automated; CST is your go-to Western blotting antibody supplier.

[cst-science.com/Q4-2023-info3](https://cst-science.com/Q4-2023-info3)

**For Research Use Only. Not for Use in Diagnostic Procedures.**

© 2023 Cell Signaling Technology, Inc. CST, Cell Signaling Technology, and XP are registered trademarks of Cell Signaling Technology, Inc. All other trademarks are the property of their respective owners. Visit [cellsignal.com/trademarks](https://cellsignal.com/trademarks) for more information. 23-PRG-68398-EN



## Validated Antibodies for eCLIP

Save time and be confident that your eCLIP antibodies generate high-quality results you can trust. CST has partnered with Dr. Gene Yeo's lab at UCSD and Eclipsebio to bring you RNA-binding protein (RBP) antibodies that are rigorously tested and validated for RBP-eCLIP experiments. Explore our growing list of eCLIP-validated antibodies, with more to come!

[cst-science.com/Q4-2023-info4](https://cst-science.com/Q4-2023-info4)

[cellsignal.com/newproducts](https://cellsignal.com/newproducts)



**Cell Signaling**  
TECHNOLOGY®