



New Products

MAY 2024

We are continually expanding our portfolio to meet your research needs. *Check out* the new products released this month!

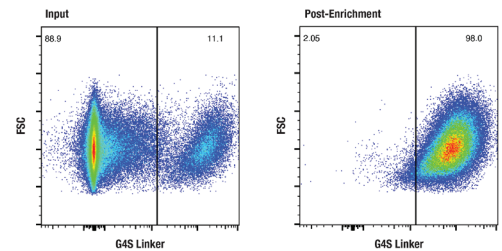
HOT PRODUCTS

CAR Enrichment Kits

**Enrich G4S or Whitlow/218 linker-transfected CAR-expressing cells
CAR (G4S Linker) Cell Enrichment Kit #48669
CAR (Whitlow/218 Linker) Cell Enrichment Kit #65686**

Magnetic bead-based immunoaffinity cell enrichment is a gentle purification method that can be leveraged, in part, to facilitate a robust interrogation of the biology of immune cells that are engineered to express CARs. For example, isolation of rare subsets of CAR positive cells from a complex, heterogeneous population of cells presents the opportunity for extensive downstream analyses using single-cell omics assays. In the context of CAR cell engineering, magnetic bead-based immunoaffinity cell enrichment can also be useful in scenarios when delivery of the CAR transgene is inefficient, resulting in a small population of cells expressing the CAR transgene.

KEYWORDS: CAR-T therapy, Cancer Immunology



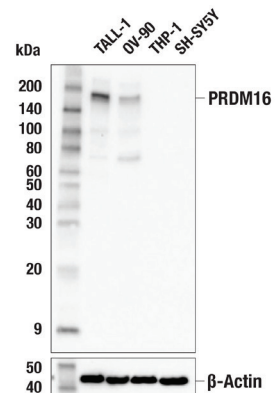
FC-L: Flow cytometric analysis of live cells in the input (left) and post-enrichment (right) for enrichment performed using biotinylated G4S Linker (E7O2V) Rabbit mAb. Input consists of CD4⁺/CD8⁺ human T cells containing a mixture of non-transduced cells and cells transfected with an scFv-based Anti-CD20 (Leu16) CAR containing a G4S linker. The post-enrichment sample shows a nearly pure population of cells expressing the CAR on the cell surface. Anti-rabbit IgG (H+L), F(ab')₂ Fragment (Alexa Fluor® 647 Conjugate) #4414 was used as a secondary antibody to detect the biotinylated antibody.

PRDM16 (F3K9T) Rabbit mAb #16212

Regulates adipocyte thermogenesis, mitochondrial function, oxidative stress, and acts as a tumor suppressor in lung cancer

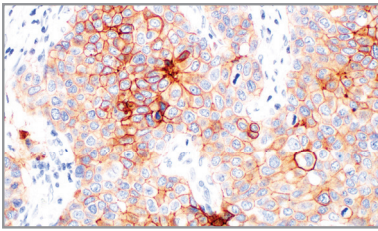
PRDM16 is a transcription factor that is structurally characterized by a conserved N-terminal PRDI-BF1 and RIZ1 homology (PR) domain and a variable number of zinc fingers. The PR domain bears similarities to the catalytic suppressor of variegation 3–9, enhancer of zeste, and trithorax (SET) domain that is found in a group of histone methyltransferases. Indeed, PRDM16 has been shown to catalyze mono-methylation of histone 3 at lysine (H3K9me1). PRDM16 is involved in the regulation of various biological processes, including adipose biology and energy homeostasis. This protein is also expressed in hematopoietic stem cells (HSCs) and plays a key role in the establishment and maintenance of these cells. More recently, PRDM16 was shown to be a suppressor of lung adenocarcinoma metastasis, and its low expression predicted poor prognosis of lung adenocarcinoma patients.

KEYWORDS: Adipogenesis, thermogenesis, mitochondria, oxidative stress, cancer.

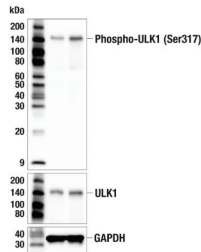


WB: Western blot analysis of extracts from various cell lines using PRDM16 (F3K9T) Rabbit mAb (upper) or β -Actin (D6A8) Rabbit mAb #8457 (lower). Low expression of PRDM16 protein in THP-1 and SH-SY5Y cells is consistent with the predicted expression pattern.

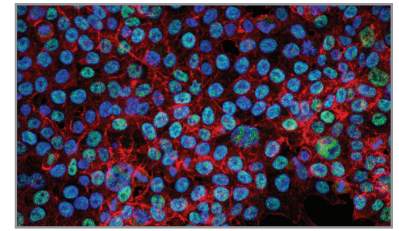




TACSTD2/TROP2 (F4W4) Rabbit mAb #76730

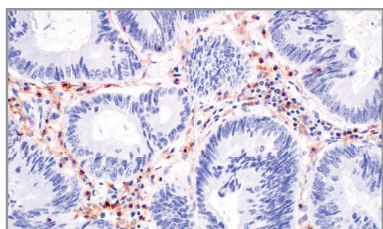


Phospho-ULK1 (Ser317) (F1Z6C) Rabbit mAb #89267

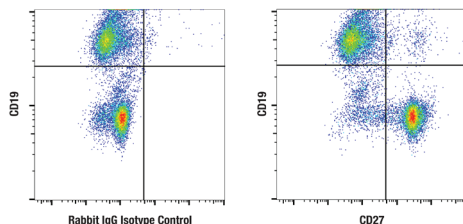


USP22 (F4M4V) Rabbit mAb #52293

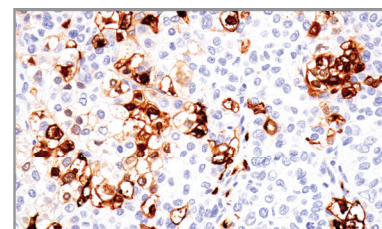
	PRODUCT	APPLICATIONS	REACTIVITY
Adhesion/ECM			
30020S	Angiotenin (F7W8U) Rabbit mAb	WB, IP, IHC-P, IF-F, IF-IC, FC-FP	H, M, R
18772S	Cathepsin D (E7Z4L) XP [®] Rabbit mAb (Alexa Fluor [®] 647 Conjugate)	IF-F, IF-IC	M
89278SF	EMCN (E3Z4D) Rabbit mAb (BSA and Azide Free)	WB, IHC-P	H
77561S	FSTL1 (E4Y1F) Rabbit mAb	WB	H, M, R
53303SF	ILK1 (4G9) Rabbit mAb (BSA and Azide Free)	WB, IHC-P	H, M, R, Hm, Mk, Z, B, Pg
52976SF	Integrin β6 (E4M9P) XP [®] Rabbit mAb (BSA and Azide Free)	WB, IHC-LB, IHC-P, IF-IC	H
30787S	Liprin α1 (E7D7W) Rabbit mAb	WB, IP, IF-IC	H
72903SF	LOXL2 (E3P7Y) Rabbit mAb (BSA and Azide Free)	WB, IHC-LB, IHC-P	H
41968SF	MAdCAM-1 (E1V8F) Rabbit mAb (BSA and Azide Free)	WB, IHC-P	H
17090SF	Osteopontin/SPP1 (E9Z1D) Rabbit mAb (BSA and Azide Free)	WB, IHC-P, IF-F, IF-IC, FC-FP	M
27371S	Periostin (E3X1U) Rabbit mAb	WB, IF-IC	H
76730S	TACSTD2/TROP2 (F4W4) Rabbit mAb	WB, IHC-LB, IHC-P	H
Apoptosis			
61921S	Gasdermin C (F9R3M) Rabbit mAb	WB	H
62142S	Phospho-c-Myc (Thr244) Antibody	WB	H, M
Autophagy			
66925SF	Aig13 (E1Y9V) Rabbit mAb (BSA and Azide Free)	WB, IF-IC	H
17274SF	SQSTM1/p62 (D5L7G) Mouse mAb (BSA and Azide Free)	WB, IHC-P, IF-IC	H
30518S	TMEM41B (F6F4Z) Rabbit mAb	WB, IP	H
89267S	Phospho-ULK1 (Ser317) (F1Z6C) Rabbit mAb	WB, IP	H, M, R
Ca, cAMP and Lipid Signaling			
49662SF	PNPLA3 (E7N6O) Rabbit mAb (BSA and Azide Free)	WB, IHC-P	M, (R)
Cell Cycle / Checkpoint Control			
31702S	Ki-67 (D3B5) Rabbit mAb (Alexa Fluor [®] 555 Conjugate)	IHC-P	M
98142SF	MSH6 (3E1) Mouse mAb (BSA and Azide Free)	WB, IHC-P, IF-IC	H
84952SF	NPM1 (E7W4P) Rabbit mAb (BSA and Azide Free)	WB, IHC-P, IF-F, IF-IC	H, M, R, Mk
52911SF	Phospho-NPM1 (Thr199) (E4C7S) Rabbit mAb (BSA and Azide Free)	WB, IHC-P	H, M, R
50604SF	p16 INK4A (D7C1M) Rabbit mAb (BSA and Azide Free)	WB, FC-FP	H
Chromatin Regulation / Nuclear Function			
98783S	BAF (E4O8R) Rabbit mAb	WB, IF-IC	H, M, R, Mk
38380S	BRD9 Matched Antibody Pair	ELISA	H
49000SF	Exportin-1/CRM1 (D6V7N) Rabbit mAb (BSA and Azide Free)	WB, IHC-P, IF-IC	H, M, Mk
81330S	Phospho-Histone H2A.X (Ser139) (D7T2V) Mouse mAb (Alexa Fluor [®] 647 Conjugate)	FC-FP	H, M, R, Mk
25734S	hnRNP A2/B1 Antibody	WB	H, M, R, Mk
16212S	PRDM16 (F3K9T) Rabbit mAb	WB, IP	H
52293S	USP22 (F4M4V) Rabbit mAb	WB, IF-IC	H, Mk
33839SF	WHSC1L1 (D4N9N) Rabbit mAb (BSA and Azide Free)	WB, IHC-P, FC-FP	H, M, R, Mk
Cytoskeletal Signaling			
56481SF	Keratin 17/19 (D4G2) XP [®] Rabbit mAb (BSA and Azide Free)	WB, IHC-P, IF-F, IF-IC	H, M, R
40080S	Villin-1 (F5F3V) Rabbit mAb	WB	H, M, R



CD4 (MSVA-004R) Rabbit mAb #99785



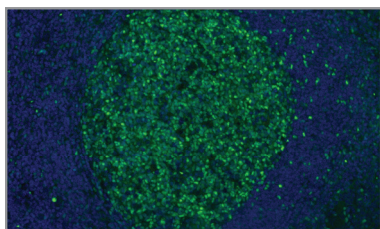
CD27 (F3R2V) Rabbit mAb #71135



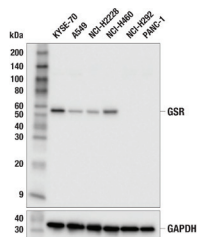
S100A8 (F4R2W) Rabbit mAb #33254

	PRODUCT	APPLICATIONS	REACTIVITY
Developmental Biology			
96585S	DLX1 (E4T1L) Rabbit mAb	WB, IF-F, IF-IC	H, M, R
55361S	Numb (F4G6B) Mouse mAb	WB, IP, IF-IC	H
19518C	PathScan® RP Total SMAD4 Sandwich ELISA Kit	ELISA	H, M, R, Mk
98185S	TCF1/TCF7 (C63D9) Rabbit mAb (mFluor™ UV375 Conjugate)	FC-FP	H, M
17225S	TCF1/TCF7 (C63D9) Rabbit mAb (mFluor™ Violet 510 Conjugate)	FC-FP	H, M
Immunology and Inflammation			
62132SF	BATF3 (E3K5H) Rabbit mAb (BSA and Azide Free)	WB, FC-FP	H
55653S	C1R (E3R7T) Rabbit mAb	WB	H
48669S	CAR (G4S Linker) Cell Enrichment Kit	FUNC	All
65686S	CAR (Whitlow/218 Linker) Cell Enrichment Kit	FUNC	All
86315S	CD3ε (E4T1B) XP® Rabbit mAb (Alexa Fluor® 647 Conjugate)	IHC-P	M
99785S	CD4 (MSVA-004R) Rabbit mAb	WB, IHC-P	H
23140S	CD4 (MSVA-004R) Rabbit mAb (BSA and Azide Free)	WB, IHC-P	H
99950S	CD9 (E3O1B) Rabbit mAb	WB, FC-L	H
33573S	CD11b/ITGAM (E4K8C) Rabbit mAb (Alexa Fluor® 488 Conjugate)	IHC-P	M
42370S	CD11b/ITGAM (E4K8C) Rabbit mAb (Alexa Fluor® 647 Conjugate)	IHC-P	M
94346S	CD22 (F9D1W) Rabbit mAb	WB, IHC-LB, IHC-P, IF-F	M
71135S	CD27 (F3R2V) Rabbit mAb	IHC-P, IF-F, IF-IC, FC-L	M
71397SF	CD31 (PECAM-1) (F8M3S) Rabbit mAb (BSA and Azide Free)	WB, IHC-P	H, Mk
16627S	CD59 (E7F7G) Rabbit mAb (PE Conjugate)	FC-L	H
28182S	CD72 (E4K4A) Rabbit mAb	FC-L	H
86117S	CD72 (E7Q7W) Rabbit mAb	WB	H
64837S	CXCR4 (E3Q4B) Rabbit mAb	WB	H
93638SF	DAPI2 (E8P9U) Rabbit mAb (BSA and Azide Free)	IHC-P	H
45723S	DEC1 (E6T3E) Rabbit mAb	WB, IP	H, M
42709S	G4S Linker (E7O2V) F(ab') ₂ Fragment (Alexa Fluor® 647 Conjugate)	FC-L	All
81909S	G4S Linker/CD3ζ CAR Matched Antibody Pair	ELISA	H
56538S	IL4R (F6C4Z) Rabbit mAb	WB, IP, FC-FP	M
49893SF	Integrin β ₂ (E9O7W) Rabbit mAb (BSA and Azide Free)	WB, IHC-P	M
51816SF	Phospho-IRF-3 (Ser386) (E7J8G) XP® Rabbit mAb (BSA and Azide Free)	WB, IF-IC, FC-FP	H
91340SF	LAMP3/CD208 (E8T2T) Rabbit mAb (BSA and Azide Free)	IHC-P	M
35923S	MHC class I (E6L8F) Rabbit mAb	WB, IP, FC-L	H, M
52972S	Myeloperoxidase (E2Z8J) Rabbit mAb (Alexa Fluor® 488 Conjugate)	IF-IC, FC-FP	H, M
76360S	Myeloperoxidase (E2Z8J) Rabbit mAb (Alexa Fluor® 647 Conjugate)	IF-IC, FC-FP	H, M
70695S	NKG7 (F4V5I) Rabbit mAb	WB, IP, IHC-P	H
34388S	NRROS (E7Q2J) Rabbit mAb	WB, IP	H
95443S	OSMR (F9Q2W) Rabbit mAb	WB	H
33254S	S100A8 (F4R2W) Rabbit mAb	WB, IHC-P, IF-IC, FC-FP	H
57331S	Semaphorin-4A (E5N3K) Rabbit mAb	WB, IHC-P, FC-FP	H
51560SF	SERPINB9 (E9J8J) XP® Rabbit mAb (BSA and Azide Free)	WB, IHC-P	H
27254SF	Phospho-SAMHD1 (Thr592) (D7O2M) Rabbit mAb (BSA and Azide Free)	WB, FC-FP	H, M, R

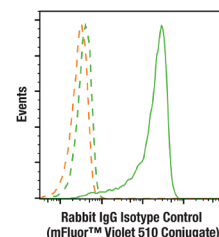
	PRODUCT	APPLICATIONS	REACTIVITY
Immunology and Inflammation (cont.)			
19413SF	Stat2 (D9J7L) Rabbit mAb (BSA and Azide Free)	WB, IF-IC, FC-FP	H, M
60695S	Phospho-Stat3 (Tyr705) (D3A7) XP® Rabbit mAb (mFluor™ UV375 Conjugate)	FC-FP	H, M, R, Mk, (Hm, B, Pg, Hr)
84951S	TAK1 (F2R2G) Rabbit mAb	WB, IP	H, M, R, Mk
73397S	Tox/Tox2 (E6I3Q) Rabbit mAb (Alexa Fluor® 488 Conjugate)	IHC-P	H, M, R
50771S	Tox/Tox2 (E6I3Q) Rabbit mAb (Alexa Fluor® 555 Conjugate)	IHC-P	H, M, R
20944S	Whitlow/218 Linker (E3U7Q) F(ab')2 Fragment (Alexa Fluor® 488 Conjugate)	FC-L	All
97322S	Whitlow/218 Linker/CD3ζ CAR Matched Antibody Pair	ELISA	H
MAP Kinase Signaling			
46615SF	Phospho-ATF-2 (Thr71)/ATF-7 (Thr53) (A8J7P) Rabbit mAb (BSA and Azide Free)	WB, FC-FP	H, M, R, Mk
82819SF	Ras (E8N8L) XP® Rabbit mAb (BSA and Azide Free)	WB, IHC-P	H, M, R, Mk
Metabolism			
85707SF	COX IV (4D11-B3-E8) Mouse mAb (BSA and Azide Free)	WB, IHC-P, IF-IC	H, M, R, Mk
10371S	Glycogen Synthase 1 (GYS1) (F4L8X) Rabbit mAb	WB	H, M, R
39627S	GOT2 (F4P3R) Rabbit mAb	WB, IHC-P, IF-IC	H, M, R
62448S	GSR (E5L1A) Rabbit mAb	WB	H
56629SF	HO-1 (E8B7A) XP® Rabbit mAb (BSA and Azide Free)	WB, IHC-P	H
28193SF	LKB1 (D60C5F10) Rabbit mAb (BSA and Azide Free)	IHC-P	H, M, Mk
97760SF	MRP1/ABCC1 (D5C1X) Rabbit mAb (BSA and Azide Free)	WB, IHC-P	H
23816S	Phospho-TFE3 (Ser321) Antibody	WB	H, M, R
41743S	PTGDS (F5R5O) Rabbit mAb	WB	H, R
Motif Antibodies			
34608S	PTMScan® HS K-e-GG Remnant Magnetic Immunoaffinity Beads	PTMScan	-
Neuroscience			
27987S	Adora2b/Adenosine Receptor A2b (E8V7W) Rabbit mAb	WB	M
76486SF	β-Amyloid (pE3 Peptide) (D5N5H) Rabbit mAb (BSA and Azide Free)	WB, IHC-P, IF-F	H
59964SF	Caspr (D8I3V) Rabbit mAb (BSA and Azide Free)	WB, IF-F	H, M, R
17460S	DCC (E4U1X) Rabbit mAb	WB	H
56130S	Doublecortin (F6K9E) Rabbit mAb	WB, IP, IF-F, IF-IC	H, M, R
52148S	EAAT1 (F8N7H) Mouse mAb	IF-F, IF-IC	H, M, (R)
10603SF	GAD1 (D1F2M) Rabbit mAb (BSA and Azide Free)	WB, IF-F	M, R, (H)
37608SF	GFAP (D1F4Q) XP® Rabbit mAb (BSA and Azide Free)	WB, IF-F	H, M, R
88436S	ITM2C/Bri3 (F3X8Z) Rabbit mAb	WB, IF-F, IF-IC	H, M, R
92872S	KIF5A (F2W1W) Rabbit mAb	WB	H, M, R
48813SF	Neurofascin 155 (D7B6O) Rabbit mAb (BSA and Azide Free)	WB, IF-F	H, M, R
88117SF	Neurofascin 186 (D6G6O) Rabbit mAb (BSA and Azide Free)	WB, IF-F	H, M, R
71153SF	Neuropilin-2 (E5Q2G) Rabbit mAb (BSA and Azide Free)	WB, IHC-P, IF-IC, FC-FP, FC-L	H
35956SF	Nicestrin (D4F6N) Rabbit mAb (BSA and Azide Free)	WB, IF-F, IF-IC	H, M, R, Mk
33990SF	PC2 (D1E1S) XP® Rabbit mAb (BSA and Azide Free)	WB, IHC-P, IF-F, IF-IC	H, M, R, (X, B, Hr)
67751S	PMP2 (E9S2A) Rabbit mAb	WB	H
57906S	PU.1 (F2D5A) Mouse mAb	WB, IP, IF-F, IF-IC	M
59236S	PU.1 (F9H3K) Mouse mAb	WB, IP	H, M
85453SF	STEP (Z3E5) Mouse mAb (BSA and Azide Free)	WB, IF-F	M, R
57320C	PathScan® RP SynGAP Sandwich ELISA Kit	ELISA	H, M, R
29745SF	SYNGR3 (E2R8R) Rabbit mAb (BSA and Azide Free)	WB, IF-F, IF-IC	H, M, R
39702S	Total α-Synuclein Matched Antibody Pair	ELISA	M, R
82418S	Tau (E5O2W) Rabbit mAb	WB, IF-F	M, R
28906S	Phospho-Tau (Thr50) (F9Y2M) Rabbit mAb	WB	H
82087S	β3-Tubulin (E9F3E) Mouse mAb (Alexa Fluor® 647 Conjugate)	IF-F, IF-IC	H, M, R
34007SF	VGLUT1 (E9D2B) Mouse mAb (BSA and Azide Free)	WB, IF-F	H, M, R



Tox/Tox2 (E6I3Q) Rabbit mAb (Alexa Fluor® 488 Conjugate) #73397



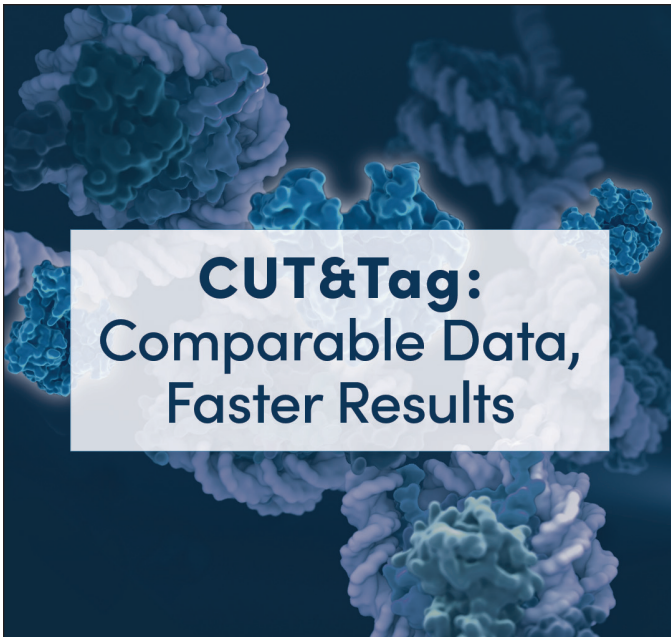
GSR (E5L1A) Rabbit mAb #62448



Rabbit (DA1E) mAb IgG XP® Isotype Control (mFluor™ Violet 510 Conjugate) #54005

PRODUCT	APPLICATIONS	REACTIVITY
Nuclear Receptor Signaling		
33544S PhosphoPlus® Androgen Receptor (Ser310) Antibody Duet	-	-
RTK		
17257S EGF Receptor (E746-A750del Specific) Matched Antibody Pair	ELISA	H
23630S EGF Receptor (L858R Mutant Specific) Matched Antibody Pair	ELISA	H
62220S FAK (F7Z4C) Mouse mAb	WB, IP, IHC-P	H, M, R
51212C PathScan® Phospho-FLT3 (Tyr589/591) Sandwich ELISA Kit	ELISA	H
94826S FRS2-α (E4B4T) Rabbit mAb	WB	H
73842S Phospho-PDGFR Receptor α/β (panTyr) Matched Antibody Pair	ELISA	H, M
Translational Control		
67311S eIF2β (F2R7D) Rabbit mAb	WB, IP	H, M, R, Mk
38311S Total S6 Ribosomal Protein Matched Antibody Pair	ELISA	H, M
55177S Phospho-S6 Ribosomal Protein (Ser235/236) Matched Antibody Pair	ELISA	H, M
32756S Phospho-S6 Ribosomal Protein (Ser235/236) (D57.2.2E) XP® Rabbit mAb (mFluor™ UV375 Conjugate)	FC-FP	H, M, R, Mk, Mi, Sc, (C, Pg)
32282S Phospho-S6 Ribosomal Protein (Ser235/236) (D57.2.2E) XP® Rabbit mAb (mFluor™ Violet 510 Conjugate)	FC-FP	H, M, R, Mk, Mi, Sc, (C, Pg)
72411S Phospho-S6 Ribosomal Protein (Ser240/244) Matched Antibody Pair	ELISA	H, M
26692C PathScan® RP Phospho-TFEB (Ser122) Sandwich ELISA Kit	ELISA	H
57002C PathScan® RP Phospho-TFEB (Ser211) Sandwich ELISA Kit	ELISA	H
61521S TRMT112 (F1A6F) Rabbit mAb	WB	H, Mk
Ubiquitin and Ubiquitin-like proteins		
63954S Phospho-Ubiquitin (Ser65) Matched Antibody Pair	ELISA	H
63924SF USP9X (D4Y7W) Rabbit mAb (BSA and Azide Free)	WB, IHC-P, IF-IC	H, M, R, Mk, (B, Dg, Hr)
Related Products		
69881S 3X DYKDDDDK Tag (E2T2) Mouse mAb (Binds to same epitope as Sigma-Aldrich Anti-FLAG M2 antibody) (HRP Conjugate)	WB	All
18878S 10X High Salt Wash Buffer (CUT&Tag)	C&T	-
29480L Protein L (APC Conjugate)	FC-L	H
58036L Protein L (PE Conjugate)	FC-L	H, M, R, Pg
31536L Protein L (PE-Cy7 Conjugate)	FC-L	All
84748S PTMScan® LysC Protease	-	-
93671S Rabbit (DA1E) IgG XP® Isotype Control F(ab')2 Fragment (Alexa Fluor® 647 Conjugate)	FC-L	-
31110S Rabbit (DA1E) mAb IgG XP® Isotype Control (mFluor™ UV375 Conjugate)	FC-FP	-
54005S Rabbit (DA1E) mAb IgG XP® Isotype Control (mFluor™ Violet 510 Conjugate)	FC-FP	-
80110SF S-Tag (D2K2V) XP® Rabbit mAb (BSA and Azide Free)	WB, IF-IC, FC-FP	All

What's New at CST



CUT&Tag: Comparable Data, Faster Results

Introducing CUT&Tag—a more efficient alternative to chromatin profiling.

- Time-savings
- Sample-savings
- Cost-savings

cst-science.com/Q2-2024-info1



NEW!

Mouse Targets FOR SignalStar™ Multiplex IHC

**SignalStar™ Multiplex IHC:
Mouse Targets:**

We just added mouse targets to our flexible, ready-to-go SignalStar™ Multiplex IHC panels. Now whether you're using human or mouse models, CST has you covered for your spatial biology research.

cst-science.com/Q2-2024-info2

For Research Use Only. Not for Use in Diagnostic Procedures.

© 2024 Cell Signaling Technology, Inc. CST, Cell Signaling Technology, and XP are registered trademarks of Cell Signaling Technology, Inc. All other trademarks are the property of their respective owners. Visit cellsignal.com/trademarks for more information. 24-PRG-60087-EN

cellsignal.com/newproducts



Cell Signaling
TECHNOLOGY®