

New Products from CST®—February 2026

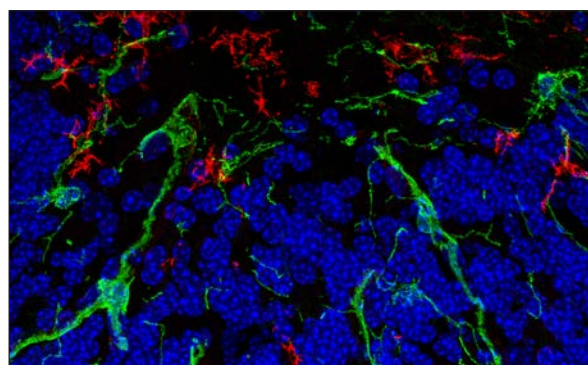
We are continually expanding our portfolio to meet your research needs. Check out the new products released this month!

NG2/CSPG4 (F8X3M) Rabbit Monoclonal Antibody #54851

Proteoglycan Involved in Cell Scaffolding and Signaling

NG2 is a transmembrane chondroitin sulfate proteoglycan present on the cell surface. It promotes cell proliferation, migration, and metastasis through phosphorylation by PKCα and ERK. It is also expressed in vascular pericytes to regulate angiogenesis, and in the nervous system, it is involved in myelin repair as a marker of oligodendrocyte precursor cells. It is highly expressed in intractable cancers such as melanoma, glioblastoma, and triple-negative breast cancer, and is associated with treatment resistance and metastasis. Taking advantage of its unique expression pattern, NG2 is currently being clinically applied as a promising target for cancer immunotherapy, such as CAR-T cell therapy. #54851 is suitable for WB, IP, IF-F, IF-IC, FC-FP, and FC-L analysis using human, mouse, and rat samples.

KEYWORDS: cancer cell metastasis, nerve regeneration, angiogenesis



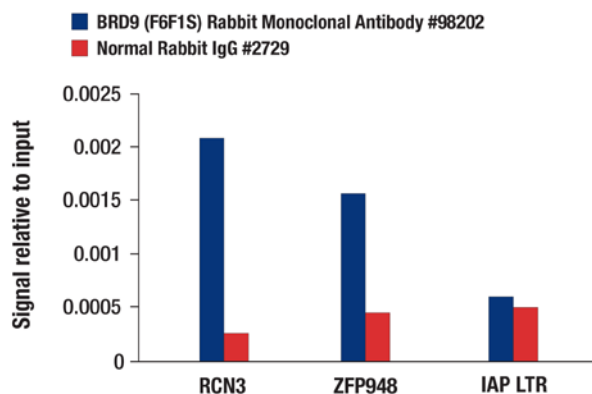
IF-F: Confocal IF analysis of fixed mouse cerebellum labeled with #54851 (green), TMEM119 (E4B9S) Mouse Monoclonal Antibody #98778 (red), and ProLong Gold Antifade Reagent with DAPI #8961 (blue).

BRD9 (F6F1S) Rabbit Monoclonal Antibody #98202

Chromatin Remodeling Component

BRD9, a component of the non-canonical BAF complex, recognizes acetylated histones via its bromodomain and targets the complex to specific gene promoters and enhancers. BRD9 is particularly involved in maintaining stem cell pluripotency, cell differentiation, and regulating immune responses, regulating the expression of genes essential for cell fate determination. It has also been reported to be essential for tumor survival in synovial sarcoma and malignant rhabdoid tumors, which possess characteristic gene fusions. BRD9 is also involved in the proliferation of acute myeloid leukemia (AML), and in recent years, development of drugs targeting BRD9, such as PROTACs (targeted protein degradation inducers), has been progressing. #98202 is suitable for WB, IP, and ChIP using mouse and rat samples.

KEYWORDS: cancer, chromatin remodeling, acetylated histones



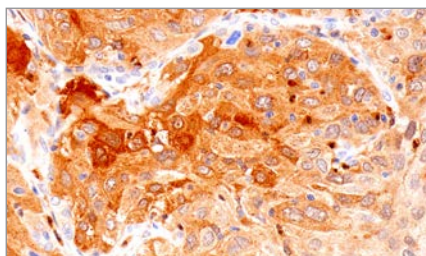
ChIP: ChIP were performed with cross-linked chromatin from NIH/3T3 cells and either #98202 or Normal Rabbit IgG #2729, using SimpleChIP® Plus Enzymatic Chromatin IP Kit (Magnetic Beads) #9005. The enriched DNA was quantified by real-time PCR, using human RCN3 promoter primers, human ZFP948 intron 1 primers, and SimpleChIP® Mouse Intracisternal A-Particle (IAP) LTR Primers #85916. The amount of immunoprecipitated DNA in each sample is represented as signal relative to the total amount of input chromatin, which is equivalent to one.



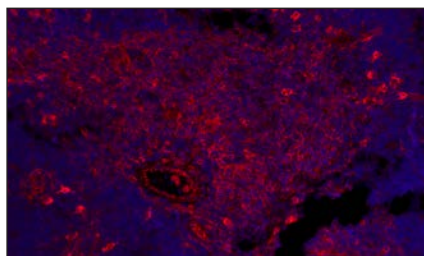
Learn more at
cellsignal.com/newproducts



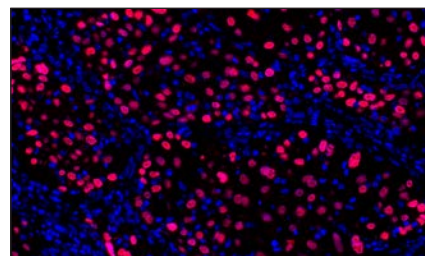
Cell Signaling
 TECHNOLOGY®



Cystatin-A (F2W9D) Rabbit Monoclonal Antibody #75912



STING (D2P2F) Rabbit Monoclonal Antibody (Alexa Fluor® 647 Conjugate) #59904



p63 (D9L7L) Rabbit Monoclonal Antibody (Alexa Fluor® 647 Conjugate) #89427

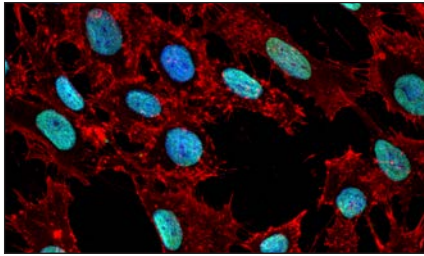
PRODUCT	APPLICATIONS	REACTIVITY
Adhesion/Extracellular Matrix		
87124S CD103/ITGAE (F9M2R) Rabbit Monoclonal Antibody	WB, IF-F	M
87124T		
75912S Cystatin-A (F2W9D) Rabbit Monoclonal Antibody	WB, IHC-P, IF-IC	H
75912T		
Adoptive Cell Therapy and Cancer Vaccines		
41223S CD7 (E4G1Q) Rabbit Monoclonal Antibody (Alexa Fluor® 647 Conjugate)	IHC-P	H
17621L G4S Linker (E7O2V) Rabbit Monoclonal Antibody (Biotinylated)	FC-L	All
32523L Whitlow/218 Linker (E3U7Q) Rabbit Monoclonal Antibody (Biotinylated)	FC-L	All
35016S Whitlow/218 Linker (1B4A1) Mouse Monoclonal Antibody (Biotinylated)	FC-FP, FC-L	All
Alzheimer's disease		
17976SF Beta-Amyloid (1-39) (D5Y9L) Rabbit Monoclonal Antibody (BSA and Azide Free)	WB	H, (M, R, Mk, B)
33134P Phospho-Tau (Thr217) (E9Y4S) Rabbit Monoclonal Antibody (Biotinylated)	WB, E-P	H, M, R
Apoptosis		
48139S Cleaved Caspase-4 (Asp270)/Caspase-5 (Asp327) (F3Q2F) Rabbit Monoclonal Antibody	WB	H
48139T		
Autoimmunity and Inflammation		
93264S CXCL14 (F1D8H) Rabbit Monoclonal Antibody	WB	H, (M, Hm)
93264T		
41473S S100A9 (D3U8M) Rabbit Monoclonal Antibody (Alexa Fluor® 555 Conjugate)	IHC-P, FC-FP	M, R
Autophagy		
80644S TFE3 Matched Antibody Pair	ELISA	H, M
70104S Phospho-TFE3 (Ser321) Matched Antibody Pair	ELISA	H, M, R, Mk
77857S Total ULK1 Matched Antibody Pair	ELISA	H, M
95085SF Phospho-ULK1 (Ser317) (F1Z6C) Rabbit Monoclonal Antibody (BSA and Azide Free)	WB, ELISA	H, M, R
15217S Phospho-ULK1 (Ser317) Matched Antibody Pair	ELISA	H, M
33769S Phospho-ULK1 (Ser555) Matched Antibody Pair	ELISA	H, M
92582SF Phospho-ULK1 (Ser638) (D8K9O) Rabbit Monoclonal Antibody (BSA and Azide Free)	WB, ELISA	H, M, Mk
95602S Phospho-ULK1 (Ser638) Matched Antibody Pair	ELISA	H, M
79488SF Phospho-ULK1 (Ser757) (D7O6U) Rabbit Monoclonal Antibody (BSA and Azide Free)	WB, IF-IC, FC-FP, ELISA	H, M, R, Mk
57034S Phospho-ULK1 (Ser757) Matched Antibody Pair	ELISA	H, M
Biochemical Metabolism and Signaling - Lipids		
64758S ACSL5 (F8M1Q) Rabbit Monoclonal Antibody	WB, IP, IF-IC	H
64758T		
92185S FABP3 (F1E1W) Rabbit Monoclonal Antibody	WB	H, M, R
92185T		
Cell Autonomous Innate Immunity		
93187S Phospho-IRF-7 (Ser437/438) Matched Antibody Pair	ELISA	M
49256S SAMD9 (F9J1K) Rabbit Monoclonal Antibody	WB, IP	H
49256T		
59904S STING (D2P2F) Rabbit Monoclonal Antibody (Alexa Fluor® 647 Conjugate)	IHC-P	H, M, Hm
Cell Cycle		
16843S p16 INK4A (F2T7H) Rabbit Monoclonal Antibody (Alexa Fluor® 555 Conjugate)	FC-FP	M
36069S p16 INK4A (F2T7H) Rabbit Monoclonal Antibody (Alexa Fluor® 647 Conjugate)	FC-FP	M
Chromatin Acylation and Phosphorylation		
49054S ARID5A (F1X7C) Rabbit Monoclonal Antibody	WB, IP	M
49054T		
95038SF Bmi1 (D42B3) Rabbit Monoclonal Antibody (BSA and Azide Free)	WB, IF-IC, ELISA	H, M, R, Mk



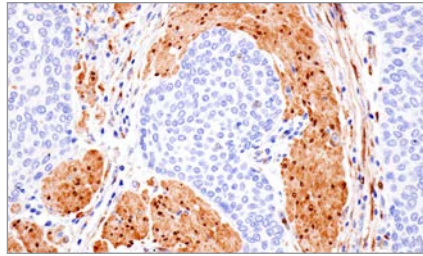
Learn more at
cellsignal.com/newproducts



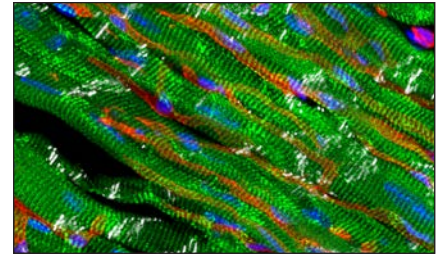
Cell Signaling
TECHNOLOGY®



MG-H1 Glycated Histone H3 (Arg17) (E3Z1R) Rabbit Monoclonal Antibody #94948



PPP1R14A/CPI-17 (F1I6X) Rabbit Monoclonal Antibody #66256



LAMA2 (F4S9K) Rabbit Monoclonal Antibody #88464

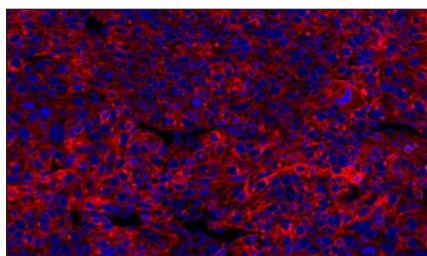
PRODUCT	APPLICATIONS	REACTIVITY
Chromatin Acylation and Phosphorylation (<i>cont.</i>)		
53968S Total Bmi1 Matched Antibody Pair	ELISA	H, M, Mk
98202S BRD9 (F6F1S) Rabbit Monoclonal Antibody	WB, IP, ChIP	M, R
98202T		
46653S FBXL11 (F6R4Y) Rabbit Monoclonal Antibody	WB, ChIP	H, M, R, Mk
46653T		
45506SF PCAF (C14G9) Rabbit Monoclonal Antibody (BSA and Azide Free)	WB	H, M, R, Mk, (B, Hr, F)
16990S PCGF2 (F9G6A) Rabbit Monoclonal Antibody	WB, IP	H, Mk
16990T		
Cytoskeletal		
69313S Pan-Keratin (C11) Mouse Monoclonal Antibody (mFluor™ Red 780 Conjugate)	FC-FP	H, M, R, Mk
23119S Pan-Keratin (C11) Mouse Monoclonal Antibody (mFluor™ Violet 510 Conjugate)	FC-FP	H, M, R, Mk
4285P alpha-Tubulin (11H10) Rabbit Monoclonal Antibody (Biotinylated)	WB, E-P	H, M, R, Mk, Dm, Z, B, Pg, (Dg)
DIFFERENTIATION - Transcription Factor		
36930SF HNF1-alpha (D7Z2Q) Rabbit Monoclonal Antibody (BSA and Azide Free)	WB, IF-IC	H, M, R
DNA Damage/Senescence		
29666D FastScan™ Cas9 (<i>S. pyogenes</i>) ELISA Kit	ELISA	All
65570SF LbCpf1/Cas12a (Strain ND2006) (E8B1W) Rabbit Monoclonal Antibody (BSA and Azide Free)	WB, IF-IC, ELISA	All
64050S LbCpf1 (Strain ND2006)/Cas12a Matched Antibody Pair	ELISA	All
89427S p63 (D9L7L) Rabbit Monoclonal Antibody (Alexa Fluor® 647 Conjugate)	IHC-P	H
56616S REV1 (F6R6I) Rabbit Monoclonal Antibody	WB	H, Mk
56616T		
General Transcription Factors		
67972S RBM14 (F8B9F) Rabbit Monoclonal Antibody	WB	H, M, R, Mk
67972T		
55752S ZNF148 (F5N3O) Rabbit Monoclonal Antibody	WB, IP	H, M, R, Mk
55752T		
HIPPO		
57706P Phospho-YAP (Ser127) (D9W2I) Rabbit Monoclonal Antibody (Biotinylated)	WB, E-P	H, M, R
Histones and Histone Modifications		
3642P Phospho-Histone H3 (Ser10) (D2C8) Rabbit Monoclonal Antibody (Biotinylated)	WB, E-P	H, M, R, Mk, Z
94948S MG-H1 Glycated Histone H3 (Arg17) (E3Z1R) Rabbit Monoclonal Antibody	WB, IF-IC, FC-FP	H
94948T		
50584S MG-H1 Glycated Histone H3 (Arg17) (E2W7I) Mouse Monoclonal Antibody	WB	H
50584T		
32428C PathScan® RP MG-H1 Glycated Histone H3 (Arg17) Sandwich ELISA Kit	ELISA	H, M
40553S Acetyl-Histone H3 (Lys27) (D5E4) Rabbit Monoclonal Antibody (Alexa Fluor® 405 Conjugate)	FC-FP	H, M, R, Mk, (Hm, X, Z, Hr, GP, Rob)
4395P Tri-Methyl-Histone H3 (Lys27) (C36B1I) Rabbit Monoclonal Antibody (Biotinylated)	WB, E-P	H, M, R, Mk, (X, Z)
Immune Checkpoints and Ligands		
62732SF B7-H4 (E3Y8R) Rabbit Monoclonal Antibody (BSA and Azide Free)	ELISA	H
Inflammasome		
78739S Cleaved Gasdermin D (Asp276) Matched Antibody Pair	ELISA	M
78866S Cleaved Gasdermin D (Gly276) Matched Antibody Pair	ELISA	H
Jak/Stat Signaling		
14801P Stat3 (D3Z2G) Rabbit Monoclonal Antibody (Biotinylated)	WB, E-P	H, M, R, Mk, (B, Pg)
4093P Phospho-Stat3 (Tyr705) (D3A7) Rabbit Monoclonal Antibody (Biotinylated)	WB, E-P	H, R, Mk, M, (Hm, B, Pg, Hr)
7300D PathScan® Phospho-Stat3 (Tyr705) Sandwich ELISA Kit	ELISA	H, M, R, Mk



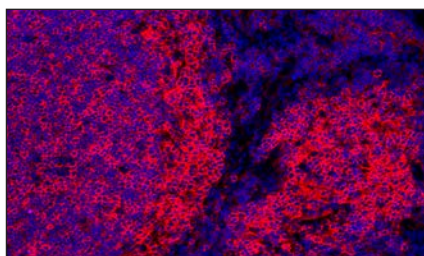
Learn more at
cellsignal.com/newproducts



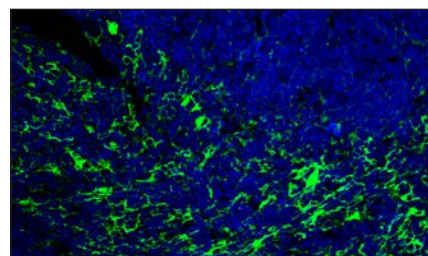
Cell Signaling
 TECHNOLOGY®



CD14 (D1U2Y) Rabbit Monoclonal Antibody (Alexa Fluor® 647 Conjugate) #20008



CD38 (E9F5A) Rabbit Monoclonal Antibody (Alexa Fluor® 555 Conjugate) #52005



MHC Class II (I-E alpha) (F8N7J) Rabbit Monoclonal Antibody (Alexa Fluor® 488 Conjugate) #32149

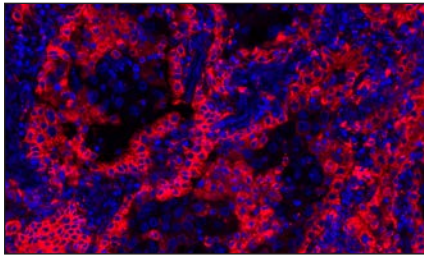
PRODUCT		APPLICATIONS	REACTIVITY
Lymphocyte Signaling			
12624P	Btk (D3H5) Rabbit Monoclonal Antibody (Biotinylated)	WB, E-P	H, M, (R, Hm, Mk, B, Dg, Pg, Hr, Chimp)
36609D	FastScan™ Total Btk ELISA Kit	ELISA	H
82703T	LAT Signalosome Antibody Sampler Kit	-	-
80554P	SLP-76 (D1R1A) Rabbit Monoclonal Antibody (Biotinylated)	WB, E-P	H
97818P	Syk (D3Z1E) Rabbit Monoclonal Antibody (Biotinylated)	WB, E-P	H, M, R
5514P	Phospho-Syk (Tyr525/526) (C87C1) Rabbit Monoclonal Antibody (Biotinylated)	WB, E-P	H, (M, R)
MAP kinase			
53485SF	Phospho-MAPKAPK-2 (Thr334) (27B7) Rabbit Monoclonal Antibody (BSA and Azide Free)	WB	H, M, R, Mk
98060SF	MEK1 (61B12) Mouse Monoclonal Antibody (BSA and Azide Free)	WB, ELISA	H, M, R, Mk
84036S	Phospho-MEK1 (Ser217/221) Matched Antibody Pair	ELISA	H, M
65655S	Total MEK1 Matched Antibody Pair	ELISA	H, M
2387P	p38 MAPK (D13E1) Rabbit Monoclonal Antibody (Biotinylated)	WB, E-P	H, M, R, Hm, Mk, B, Pg, (C, Chimp)
14227P	Phospho-p44/42 MAPK (Erk1/2) (Thr202/Tyr204) (197G2) Rabbit Monoclonal Antibody (Biotinylated)	WB, E-P	H, M, R, Mk, Mi, Dm, Z, Pg
66256S	PPP1R14A/CPI-17 (F1I6X) Rabbit Monoclonal Antibody	WB, IP, IHC-P, IF-IC	H, M, R
66256T			
51548S	PPP1R14A/CPI-17 (F4D8A) Rabbit Monoclonal Antibody	WB	H, M, R
51548T			
98511S	Phospho-PPP1R14A/CPI-17 (Thr38) (F1V4V) Rabbit Monoclonal Antibody	WB	H, R, (M)
98511T			
Neural function (neurite extension, axonal guidance, synaptogenesis, myelination and neuron-glia cell interactions)			
4095P	Phospho-CREB (Ser133) (87G3) Rabbit Monoclonal Antibody (Biotinylated)	WB, E-P	H, M, R, (Z)
88464S	LAMA2 (F4S9K) Rabbit Monoclonal Antibody	WB, IF-F	H, M, R
88464T			
20017S	MAL (F6X1A) Rabbit Monoclonal Antibody	WB	H, M, R
20017T			
54851S	NG2/CSPG4 (F8X3M) Rabbit Monoclonal Antibody	WB, IP, IF-F, IF-IC, FC-FP, FC-L	H, M, R
54851T			
Parkinson's disease			
93098S	Total CDK5 Matched Antibody Pair	ELISA	H, M, R, Mk
17821S	PARIS/ZNF746 (F7U7T) Rabbit Monoclonal Antibody	WB, IP	H
17821T			
62773S	alpha-Synuclein (F2T7A) Rabbit Monoclonal Antibody	WB	H, M
62773T			
73983C	PathScan® RP Tyrosine Hydroxylase Sandwich ELISA Kit	ELISA	H, R
55853C	PathScan® RP Phospho-Tyrosine Hydroxylase (Ser31) Sandwich ELISA Kit	ELISA	H, R
Phenotyping and Functional Markers			
77571S	CD14 (D1U2Y) Rabbit Monoclonal Antibody (Alexa Fluor® 488 Conjugate)	IHC-P	M
20008S	CD14 (D1U2Y) Rabbit Monoclonal Antibody (Alexa Fluor® 647 Conjugate)	IHC-P	M
46764S	CD38 (E9F5A) Rabbit Monoclonal Antibody (Alexa Fluor® 488 Conjugate)	IHC-P	M, R
52005S	CD38 (E9F5A) Rabbit Monoclonal Antibody (Alexa Fluor® 555 Conjugate)	IHC-P	M, R
27887S	CD38 (E9F5A) Rabbit Monoclonal Antibody (Alexa Fluor® 647 Conjugate)	IHC-P	M, R
83911S	CD68 (E3O7V) Rabbit Monoclonal Antibody (Alexa Fluor® 750 Conjugate)	IHC-P, FC-FP, FC-L	M, R, Hm
46863S	CD101/IgSF2 (F6H5E) Rabbit Monoclonal Antibody	WB	H
46863T			
32149S	MHC Class II (I-E alpha) (F8N7J) Rabbit Monoclonal Antibody (Alexa Fluor® 488 Conjugate)	IHC-P	M



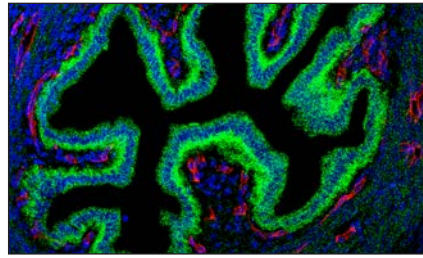
Learn more at
cellsignal.com/newproducts



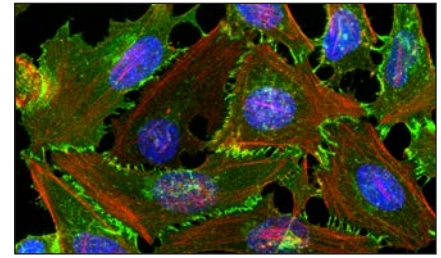
Cell Signaling
 TECHNOLOGY®



MHC Class II (LGII-612.14) Mouse Monoclonal Antibody (Alexa Fluor® 647 Conjugate) #29409



ABCD3 (F7M2I) Rabbit Monoclonal Antibody #94560



Beta-Catenin (15B8) Mouse Monoclonal Antibody #54025

PRODUCT	APPLICATIONS	REACTIVITY
Phenotyping and Functional Markers <i>(cont.)</i>		
49980S MHC Class II (I-E alpha) (F8N7J) Rabbit Monoclonal Antibody (Alexa Fluor® 647 Conjugate)	IHC-P	M
29409S MHC Class II (LGII-612.14) Mouse Monoclonal Antibody (Alexa Fluor® 647 Conjugate)	IHC-P, FC-L	H
13036S NGK7 (F4V5I) Rabbit Monoclonal Antibody (Alexa Fluor® 555 Conjugate)	IHC-P	H
PI3K/Akt/mTOR Signaling		
4821P Akt (pan) (40D4) Mouse Monoclonal Antibody (Biotinylated)	WB, E-P	H, M, R, Mk
5012P Phospho-Akt (Ser473) (D9E) Rabbit Monoclonal Antibody (Biotinylated)	WB, E-P	H, M, R, Hm, Mk, Dm, Z, B, (C, X, Dg, Pg)
15116P Phospho-Akt (Ser473) (D9W9U) Mouse Monoclonal Antibody (Biotinylated)	WB, E-P	H, M, R, Mk
76839P Akt1 (C73H10) Rabbit Monoclonal Antibody (Biotinylated)	WB, E-P	H, M, R, Mk
73553S Phospho-p70 S6 Kinase (Thr389) Matched Antibody Pair	ELISA	H, M, R, Mk
Post-synapse		
82503S Phospho-Drebrin (Ser142) (F5H8O) Rabbit Monoclonal Antibody	WB, IP	H, M, R
82503T		
74247C PathScan® RP SynGAP-alpha2 Sandwich ELISA Kit	ELISA	H, M, R
Pre-synapse & transmitters		
36451SF Synaptophysin (7H12) Mouse Monoclonal Antibody (BSA and Azide Free)	WB	H, M, R
91112P Ubiquitin (E4I2J) Rabbit Monoclonal Antibody (Biotinylated)	WB, E-P	All
88503P Phospho-Ubiquitin (Ser65) (E2J6T) Rabbit Monoclonal Antibody (Biotinylated)	WB, E-P	H, (M, R)
Receptor signaling: GPCRs, ion channels, RTKs-Neuro, transporters (SLC & ABC)		
94560S ABCD3 (F7M2I) Rabbit Monoclonal Antibody	WB, IP, IF-F, IF-IC	H, M
94560T		
RTK-Cell Biology		
95371S Phospho-HER2/ErbB2 (Tyr1221/1222) Matched Antibody Pair	ELISA	H
8041P Met (D1C2) Rabbit Monoclonal Antibody (Biotinylated)	WB, E-P	H
5086P Met (L41G3) Mouse Monoclonal Antibody (Biotinylated)	WB, E-P	H, Mk
4033P Phospho-Met (Tyr1234/1235) (D26) Rabbit Monoclonal Antibody (Biotinylated)	WB, E-P	H, R, M
TAG		
3946P Myc-Tag (71D10) Rabbit Monoclonal Antibody (Biotinylated)	WB, E-P	All
TGFB/BMP		
12584P SMAD2 (D43B4) Rabbit Monoclonal Antibody (Biotinylated)	WB, E-P	H, M, R, Mk
10649S SMAD2 Matched Antibody Pair	ELISA	H, M, R, Mk
12470P SMAD2/3 (D7G7) Rabbit Monoclonal Antibody (Biotinylated)	WB, E-P	H, M, R, Mk
Translational Control		
8594P 4E-BP1 (53H11) Rabbit Monoclonal Antibody (Biotinylated)	WB, E-P	H, M, R, Mk
5199P Phospho-eIF2 alpha (Ser51) (D9G8) Rabbit Monoclonal Antibody (Biotinylated)	WB, E-P	H, M, R, Mk, Dm
52933S HRI (F9Y7H) Rabbit Monoclonal Antibody	WB, IP	H
52933T		
Vesicle and Protein Trafficking		
37594S LAMP3/CD208 (E8T2T) Rabbit Monoclonal Antibody (Alexa Fluor® 647 Conjugate)	IHC-P	M
54906S Phospho-NDRG1 (Ser330) Matched Antibody Pair	ELISA	H, Mk
84989S Phospho-NPM1 (Thr199) Matched Antibody Pair	ELISA	H, M, R, Mk
62577S OMP25/SYNJ2BP (FSX50) Rabbit Monoclonal Antibody	WB, IP	H, M
62577T		
WNT		
54025S Beta-Catenin (15B8) Mouse Monoclonal Antibody	WB, IHC-P, IF-IC	H, M, R
54025T		

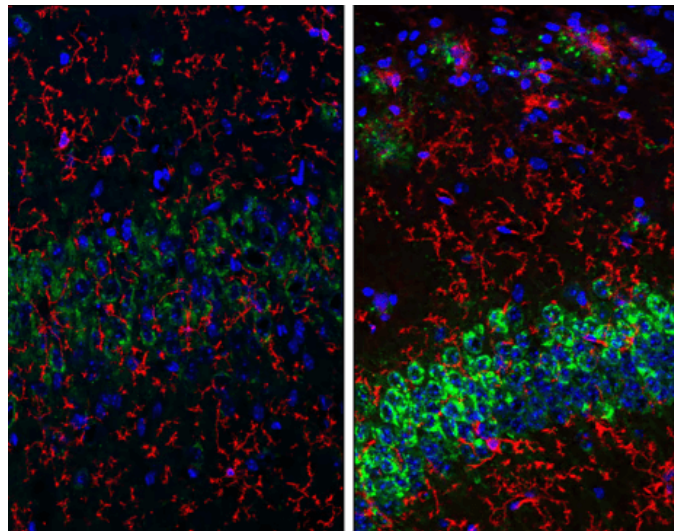
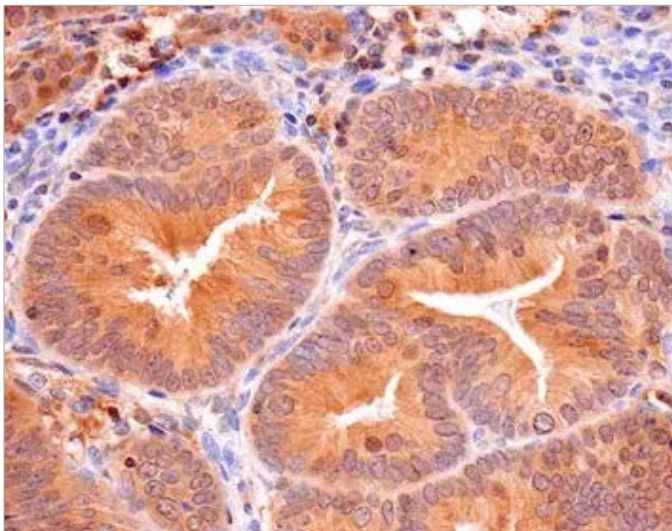


Learn more at
cellsignal.com/newproducts



Cell Signaling
 TECHNOLOGY®

What's New at CST



Your Guide to Apoptosis

Explore the mechanisms, pathways, and proteins involved in apoptotic cell death—and review the key markers and assays for studying its role in normal and disease states.

cst-science.com/Q1-2026-info1

Your Neurodegenerative Disease Research Toolbox

Explore key biofluid biomarkers for Alzheimer's disease, Parkinson's disease, and other neurodegenerative conditions—plus the right antibodies and ELISA kits to reliably detect them.

cst-science.com/Q1-2026-info2

© 2026 Cell Signaling Technology, Inc. CST, Cell Signaling Technology, and InTraSeq are registered trademarks of Cell Signaling Technology, Inc. 10x Genomics, 10x, Feature Barcode, and Chromium are the trademarks or registered trademarks of 10x Genomics, Inc. All other trademarks are the property of their respective owners. Visit cellsignal.com/trademarks for more information. Subject to patents licensed from 10x Genomics, Inc., for use with single-cell (i.e., Chromium) 10x products.



Learn more at
cellsignal.com/newproducts



Cell Signaling
TECHNOLOGY®