



New Products

FEBRUARY 2025

We are continually expanding our portfolio to meet your research needs. *Check out* the new products released this month!

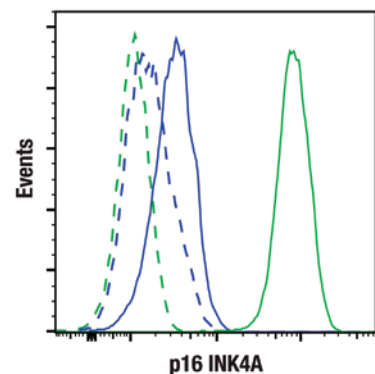
HOT PRODUCTS

p16 INK4A (F3I7K) Rabbit mAb #82172

Cellular senescence marker p16 INK4A

p16 INK4A, which belongs to the INK4 family that inhibits CDK4 and CDK6, is a representative marker for cellular senescence. In recent years, it has been suggested that inhibiting activation of the PI3K/Akt pathway may worsen septic cardiac dysfunction. It has also attracted attention in a variety of fields, including research into the promotion of Tau phosphorylation in neurons differentiated from pluripotent stem cells, the different functions of macrophages and endothelial cells in liver fibrosis, and potential biomarkers for prognosis and treatment strategies in endometrial cancer. #82172 is suitable for WB and IP using mouse cells as well as flow cytometry experiments.

KEYWORDS: cellular senescence, macrophages, cancer



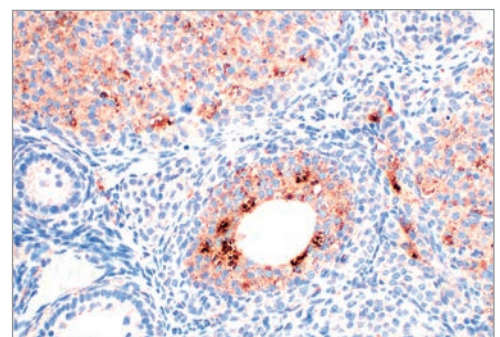
FC-FP: Flow cytometric analysis of NIH/3T3 cells (blue, negative) and MEF cells (green, positive) using #82172 (solid lines) or concentration-matched Rabbit (DAIE) mAb IgG XP[®] Isotype Control #3900 (dashed lines). Anti-rabbit IgG (H+L), F(ab), Fragment (Alexa Fluor[®] 488 Conjugate) #4412 was used as a secondary antibody.

Cathepsin Z (F6D7U) Rabbit mAb #23368

Cathepsin Z is involved in a variety of diseases

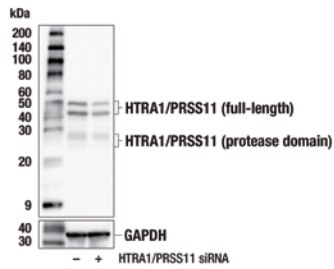
Cathepsin Z, also known as Cathepsin X and Cathepsin P, is a member of the lysosomal cysteine proteases. It is known to function in cell adhesion, signal transduction, and extracellular matrix remodeling. Cathepsin Z is expressed in immune cells such as macrophages, monocytes, and dendritic cells, while overexpression of Cathepsin Z has been reported to induce epithelial-mesenchymal transition in hepatocellular carcinoma and contribute to tumor metastasis. In addition, it is also expressed and secreted by activated microglia in the brain, suggesting that it plays a role in neuroinflammation. #23368 is suitable for immunohistochemical staining of human, mouse, and rat.

KEYWORDS: cysteine protease, cancer, neuroinflammation

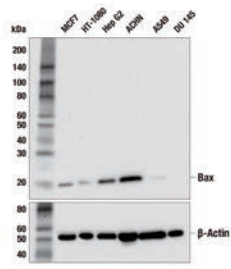


IHC-P: IHC analysis of paraffin-embedded mouse ovary using #23368.

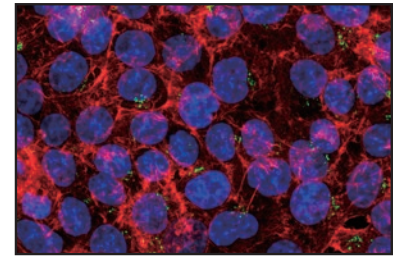




HTRA1/PRSS11 (E6Y8E) Rabbit mAb #64502

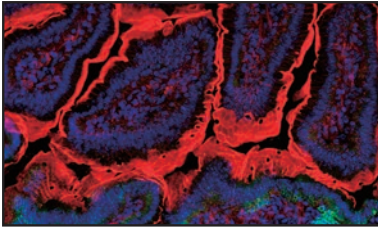


Bax (2D2) Mouse mAb #36030

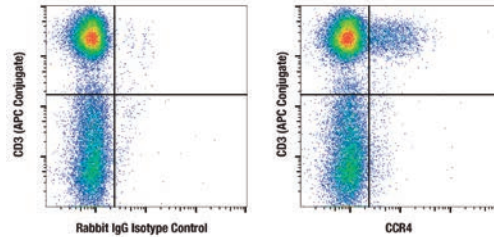


GOLGA4/GOLGIN-245 (F2V4L) Rabbit mAb #90658

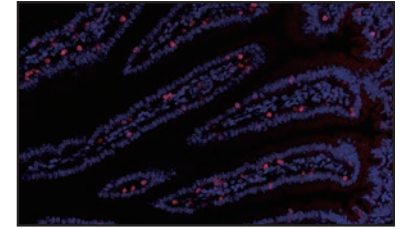
PRODUCT	APPLICATIONS	REACTIVITY
Adhesion/ECM		
86263S COL1A1 Matched Antibody Pair	ELISA	H
64502S HTRA1/PRSS11 (E6Y8E) Rabbit mAb	WB	H, M, R
64502T		
17339SF MUC13 (E6Z1K) Rabbit mAb (BSA and Azide Free)	WB, IHC-P, IF-IC	H
Apoptosis		
36030S Bax (2D2) Mouse mAb	WB, IP	H
36030T		
89347S Cleaved Caspase-3 (Asp175) (D3E9) Rabbit mAb (Alexa Fluor® 405 Conjugate)	FC-FP	H, M, (R, B, Dg, Pg)
25566C PathScan® RP Cleaved Gasdermin D (Asp276) Sandwich ELISA Kit	ELISA	M
48980S NLRP2 (F3C9H) Rabbit mAb	WB, IP	H
48980T		
87112S Total Survivin Matched Antibody Pair	ELISA	H, Mk
Ca, cAMP and Lipid Signaling		
41294S Calreticulin (D3E6) XP® Rabbit mAb (Alexa Fluor® 700 Conjugate)	FC-FP	H, M, R
25569S Calreticulin (D3E6) XP® Rabbit mAb (mFluor™ Red 780 Conjugate)	FC-FP	H, M, R
23920S PDE3A (F716O) Rabbit mAb	WB	H
23920T		
Cell Cycle / Checkpoint Control		
29860S Phospho-Chk1 (Ser345) Matched Antibody Pair	ELISA	H
82172S p16 INK4A (F317K) Rabbit mAb	WB, IP, FC-FP	M
82172T		
96364SF Phospho-PLK1 (Thr210) (DSH7) Rabbit mAb (BSA and Azide Free)	WB, ELISA	H
69936S Phospho-Rb (Thr821) (E6J1L) Rabbit mAb (Alexa Fluor® 647 Conjugate)	FC-FP	H, M, R
34872S TRF1 (F6G3X) Rabbit mAb	WB, IP	H
34872T		
Chromatin Regulation / Nuclear Function		
53555SF AsCpf1/Cas12a (Strain BV3L6) (3D3-F7) Mouse mAb (BSA and Azide Free)	WB, ELISA	All
99638S Phospho-Histone H3 (Ser10) (D2C8) XP® Rabbit mAb (Alexa Fluor® 405 Conjugate)	FC-FP	H, M, R, Mk, Z
Cytoskeletal Signaling		
90658S GOLGA4/GOLGIN-245 (F2V4L) Rabbit mAb	WB, IP, IF-IC	H, (M, R, Rab)
90658T		
16546S SPTBN1 (F9M4B) Rabbit mAb	WB	H, M, R, Mk
16546T		
55487S Transferrin Receptor/CD71 (E6J1Z) Rabbit mAb	WB, IP, IF-F, IF-IC	M, R
55487T		
19193S Vimentin (D21H3) XP® Rabbit mAb (Alexa Fluor® 405 Conjugate)	FC-FP	H, M, R, Hm, Mk



Transferrin Receptor/CD71 (E6J1Z) Rabbit mAb #55487

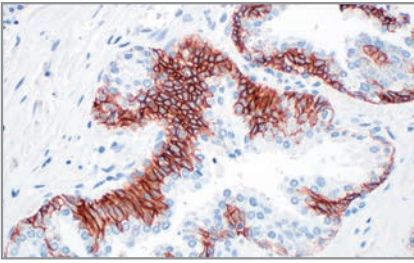


CCR4 (F3U4C) Rabbit mAb #34789

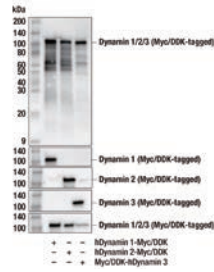


CD3ε (D4V8L) Rabbit mAb (Alexa Fluor® 647 Conjugate) #17928

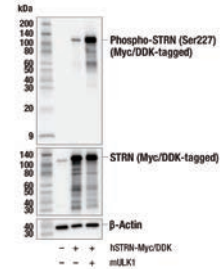
PRODUCT	APPLICATIONS	REACTIVITY
Cytoskeletal Signaling (cont.)		
72304S Vimentin (D21H3) XP® Rabbit mAb (mFluor™ Violet 510 Conjugate)	FC-FP	H, M, R, Hm, Mk
Immunology and Inflammation		
71825S BTNL9 (F2F8S) Rabbit mAb	WB	H
71825T		
88297S Cathepsin Z (F4M4S) Rabbit mAb	WB, IHC-P	H
88297T		
23368S Cathepsin Z (F6D7U) Rabbit mAb	WB, IHC-P	H, M, R
23368T		
34789S CCR4 (F3U4C) Rabbit mAb	WB, FC-L	H
34789T		
40342S CD3ε (D4V8L) Rabbit mAb (Alexa Fluor® 488 Conjugate)	IHC-P	M
17928S CD3ε (D4V8L) Rabbit mAb (Alexa Fluor® 647 Conjugate)	IHC-P	M
53589S CD27 (E5E7H) Rabbit mAb (PE Conjugate)	FC-L	M
99618S CD44 v6 (C44Mab-9) Mouse mAb	WB, IHC-P, FC-L	H
99618T		
86006S CRELD1 (E1B6T) Rabbit mAb (Alexa Fluor® 647 Conjugate)	FC-L	H, M, R
27545S IL-6 (E1D1N) Rabbit mAb (Alexa Fluor® 647 Conjugate)	FC-FP	H
62195S MSR1 (E4H1C) Rabbit mAb (Alexa Fluor® 647 Conjugate)	IF-F, IF-IC, FC-FP, FC-L	M
73950SF NKG7 (E6S2A) Rabbit mAb (BSA and Azide Free)	WB, IF-IC, FC-FP	H
24494S Total PD-L1 Matched Antibody Pair	ELISA	M
97309S POU2F2 (F3B7M) Rabbit mAb (Alexa Fluor® 488 Conjugate)	FC-FP	H, M
91111S PTPRJ/DEP-1 (F4G8K) Rabbit mAb (Alexa Fluor® 647 Conjugate)	FC-FP, FC-L	H
80833S Phospho-Stat1 (Tyr701) (58D6) Rabbit mAb (mFluor™ UV375 Conjugate)	FC-FP	H, M
29687S Phospho-Stat1 (Tyr701) (58D6) Rabbit mAb (mFluor™ Violet 510 Conjugate)	FC-FP	H, M
71092S Total TBK1/NAK Matched Antibody Pair	ELISA	H
99898SF Whitlow/218 Linker (F2G3S) Rabbit mAb (BSA and Azide Free)	WB, IHC-P	All
59451S Phospho-Zap-70 (Tyr319) Matched Antibody Pair	ELISA	H
Infectious Diseases		
99797S Influenza A Nucleoprotein (NP) (F8L6X) Rabbit mAb	WB, IHC-P	Vir
99797T		
64812S SARS-CoV-2 Spike Protein Matched Antibody Pair	ELISA	Vir
MAP Kinase Signaling		
51169SF RSK1 (D6D5) Rabbit mAb (BSA and Azide Free)	WB, ELISA	H, M, R, Mk, B, Pg, (C, Dg, Hr, Rab)
Metabolism		
36354T Iron Homeostasis/Ferroptosis Antibody Sampler Kit	-	-



CCD44 v6 (C44Mab-9) Mouse mAb #99618

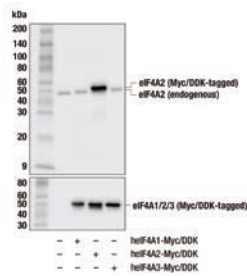


Dynamin (pan) (F2E9N) Rabbit mAb #43278

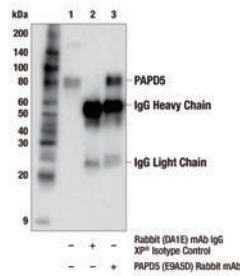


Phospho-STRN (Ser227) (F5B2D) Rabbit mAb #76064

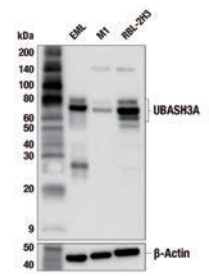
PRODUCT	APPLICATIONS	REACTIVITY
Metabolism (cont.)		
37923S LASS1 (F1D4P) Rabbit mAb	WB	H
37923T		
49825SF MCT1/SLC16A1 (E7A2K) Rabbit mAb (BSA and Azide Free)	WB, IHC-P, IF-IC, FC-FP	H
Neuroscience		
30370T Genetics of Parkinson's Disease: Mitochondrial Dysfunction Antibody Sampler Kit	-	-
44339S PU.1 (F2D5A) Mouse mAb (Alexa Fluor® 488 Conjugate)	FC-FP	M
52004SF Phospho-Synapsin-1 (Ser9) (E3D2X) Rabbit mAb (BSA and Azide Free)	WB, IF-F, ELISA	H, M, R
51525S Phospho-Tau (Thr217) Matched Antibody Pair	ELISA	H, M, R
PI3K / Akt Signaling		
42434S Phospho-Akt (Ser473) (D9E) XP® Rabbit mAb (Alexa Fluor® 750 Conjugate)	FC-FP	H, M, R, Hm, Mk, Dm, Z, B, (C, X, Dg, Pg)
26898S Phospho-Akt (Ser473) (D9E) XP® Rabbit mAb (mFluor™ Red 780 Conjugate)	FC-FP	H, M, R, Hm, Mk, Dm, Z, B, (C, X, Dg, Pg)
98332S Total mTOR Matched Antibody Pair	ELISA	H, M, R, Mk
Protein Folding and Trafficking		
43278S Dynamin (pan) (F2E9N) Rabbit mAb	WB, IP	H, M, R
43278T		
90438S Dynamin 2 (F3U2A) Rabbit mAb	WB, IP	H
90438T		
76064S Phospho-STRN (Ser227) (F5B2D) Rabbit mAb	WB, IP	H
76064T		
RTK		
32682S Total CSF-1R/M-CSF-R Matched Antibody Pair	ELISA	H
99943S Total HER4/ErbB4 Matched Antibody Pair	ELISA	H
53224S Phospho-HER4/ErbB4 (panTyr) Matched Antibody Pair	ELISA	H
33237S Phospho-c-Kit (Tyr703) Matched Antibody Pair	ELISA	H
26936S Phospho-c-Kit (panTyr) Matched Antibody Pair	ELISA	H
63895S Phospho-Ron (panTyr) Matched Antibody Pair	ELISA	H
35744SF ROS1 (69D6) Mouse mAb (BSA and Azide Free)	WB, ELISA	H
Translational Control		
99459S Phospho-4E-BP1 (Ser65) Matched Antibody Pair	ELISA	H
41385S eIF4A2 (F3S3X) Rabbit mAb	WB, IP	H, M, R, Mk
41385T		
59032S MAGOH (F8LIV) Rabbit mAb	WB	H, M, R, Mk
59032T		
47387S PAPD5 (E9A5D) Rabbit mAb	WB, IP	H, Mk
47387T		



eIF4A2 (F3S3X) Rabbit mAb #41385



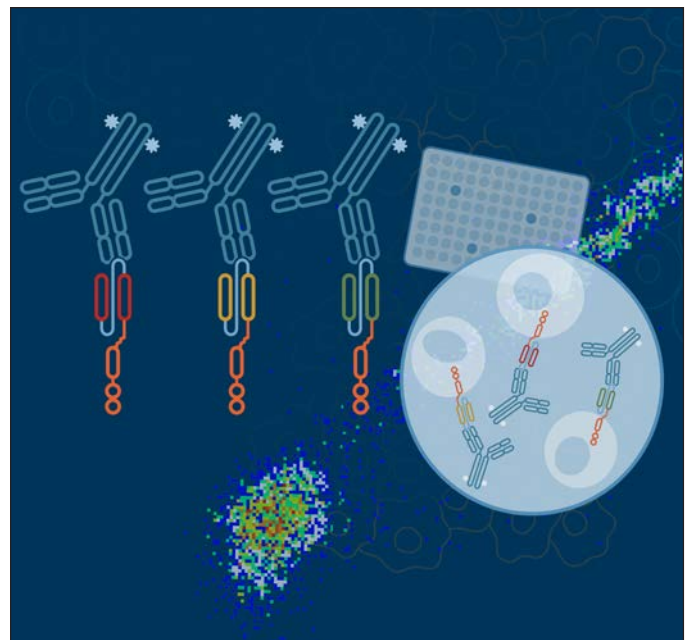
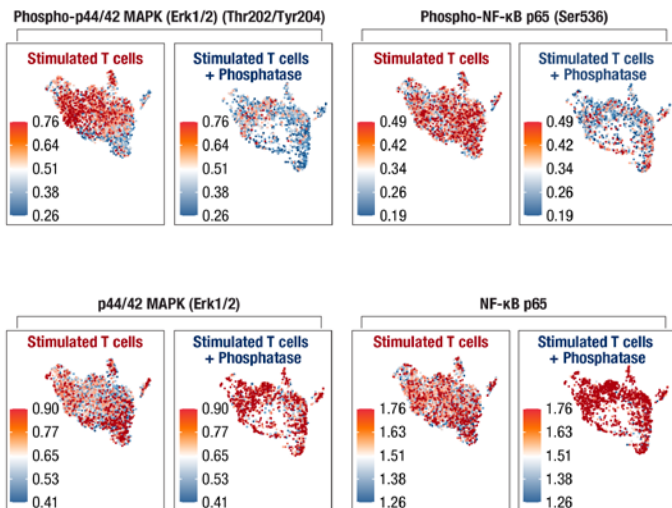
PAPD5 (E9A5D) Rabbit mAb #47387



UBASH3A (F7T5P) Rabbit mAb #41606

PRODUCT	APPLICATIONS	REACTIVITY
Ubiquitin and Ubiquitin-Like Proteins		
41606S UBASH3A (F7T5P) Rabbit mAb	WB, IP	H, M, R
41606T		
Related Products		
56090S Goat Anti-Mouse IgG (H+L) Antibody (Alexa Fluor [®] 568 Conjugate)	IF-F, IF-IC, FC-FP, FC-L	M
67939S Goat Anti-Mouse IgG (H+L) Antibody (Alexa Fluor [®] 750 Conjugate)	FC-FP, FC-L	M
89853S Goat Anti-Mouse IgG1 Antibody (Alexa Fluor [®] 488 Conjugate)	IF-F, IF-IC	M
37459S Goat Anti-Mouse IgG1 Antibody (Alexa Fluor [®] 555 Conjugate)	IF-F, IF-IC	M
92228S Goat Anti-Mouse IgG1 Antibody (Alexa Fluor [®] 647 Conjugate)	IF-F, IF-IC	M
94207S Goat Anti-Mouse IgG2a Antibody (Alexa Fluor [®] 488 Conjugate)	IF-F, IF-IC	M
51761S Goat Anti-Mouse IgG2a Antibody (Alexa Fluor [®] 555 Conjugate)	IF-F, IF-IC	M
30135S Goat Anti-Mouse IgG2a Antibody (Alexa Fluor [®] 647 Conjugate)	IF-F, IF-IC	M
98612S Goat Anti-Mouse IgG2b Antibody (Alexa Fluor [®] 488 Conjugate)	IF-F, IF-IC	M
88721S Goat Anti-Mouse IgG2b Antibody (Alexa Fluor [®] 555 Conjugate)	IF-F, IF-IC	M
57080S Goat Anti-Mouse IgG2b Antibody (Alexa Fluor [®] 647 Conjugate)	IF-F, IF-IC	M
23120S Goat Anti-Mouse IgG3 Antibody (Alexa Fluor [®] 488 Conjugate)	IF-F, IF-IC	M
39572S Goat Anti-Rabbit IgG (H+L) Antibody (Alexa Fluor [®] 568 Conjugate)	IF-F, IF-IC, FC-FP, FC-L	Rab
66559S Goat Anti-Rabbit IgG (H+L) Antibody (Alexa Fluor [®] 750 Conjugate)	FC-FP, FC-L	Rab
93684S Rabbit (DA1E) mAb IgG XP [®] Isotype Control (Alexa Fluor [®] 405 Conjugate)	FC-FP, FC-L	-
78319S Streptavidin	-	-
89067S Streptavidin (Alexa Fluor [®] 488 Conjugate)	-	-
80420S Streptavidin (Alexa Fluor [®] 555 Conjugate)	-	-
98036S Streptavidin (Alexa Fluor [®] 594 Conjugate)	-	-
55871S Streptavidin (Alexa Fluor [®] 647 Conjugate)	-	-
34524S Streptavidin (FITC Conjugate)	-	-

What's New at CST



Investigate signaling pathways with InTraSeq™ Single Cell Analysis!

- Examine intracellular with guaranteed robust RNA signal
- Explore multiple molecular mechanisms in one experiment
- Works with 10x Genomics Chromium Single Cell 3' Reagent Kits with Feature Barcoding technology

cst-science.com/Q1-2025-info1

Cutting-Edge Tools for CAR-T Cell Development:

- Novel CAR Linker antibodies for cell characterization
- IHC-validated antibodies for analyzing CAR targets
- Fluorochrome-conjugated antibodies for phenotyping

cst-science.com/Q1-2025-info2

For Research Use Only. Not for Use in Diagnostic Procedures.

© 2025 Cell Signaling Technology, Inc. CST, Cell Signaling Technology, and XP are registered trademarks of Cell Signaling Technology, Inc. 10x Genomics, 10x, Feature Barcode, and Chromium are the trademarks or registered trademarks of 10x Genomics, Inc. Subject to patents licensed from 10x Genomics, Inc. for use with single-cell (i.e., Chromium) 10x products. All other trademarks are the property of their respective owners. Visit cellsignal.com/trademarks for more information. 24-SCP-81776-EN

cellsignal.com/newproducts

 **Cell Signaling**
TECHNOLOGY®